

TEST REPORT

Reference No. : TRHZ1405755

Date : May. 30, 2014

Page No. : 1 of 106

Client : KANGTAI ELECTRIC CO., LTD

Address : NO.5, KANGTAI ROAD, HUANGHUA INDUSTRIAL DISTRICT, YUEQING, ZHEJIANG, CHINA

The following merchandise was (were) submitted and identified by the client as:

Name of Product : RADIO CONTROLLED SET

Tested Main Model : 53001*10

May Cover Model : Please refer to Appendix I

Sample Received : May. 21, 2014

Test Period : May. 21, 2014 - May. 27, 2014

Test Request : According to customer's requirements, Split the sample and determine the Pb, Cd, Hg, Cr(VI), PBBs & PBDEs content of the parts.

Test Method :

1. Sample prepared with reference to IEC 62321-2:2013 Determination of certain substances in electrotechnical products - Part 2: Disassembly, disjunction and mechanical sample preparation
2. Sample Screening testing with reference to IEC 62321-3-1:2013 Determination of certain substances in electrotechnical products - Part 3-1: Screening - Lead, mercury, cadmium, total chromium and total bromine using X-ray fluorescence spectrometry.
3. Wet Chemical Test Method
 - a. Determination of Lead ,Cadmium by ICP-OES with reference to IEC 62321-5:2013
 - b. Determination of Mercury by ICP-OES with reference to IEC 62321-4:2013
 - c. Determination of Hexavalent Chromium by Spot test or UV-Vis Method with reference to IEC 62321:2008
 - d. Determination of PBBs and PBDEs by GC-MS with reference to IEC 62321:2008

Test Result : Please refer to next page(s).

Conclusion : Based on the analysis on the submitted samples, the test results **comply with** the RoHS Directive 2011/65/EU (RoHS 2.0) and its subsequent amendments.

Issued by:



TÜV NORD (Hangzhou)
Green Product Service Centre
Technical Manager

TÜV NORD (Hangzhou) CO.,LTD.

Member of TÜV NORD Group

This Test Report is issued by the Company Subject to its General Conditions of Service printed overleaf or available on request. Attention is drawn to the limitations of liability, indemnification and jurisdictional policies defined therein. The results shown in this Test report refer only to the sample(s) tested unless otherwise stated. This test report shall not be reproduced, except in full, without written approval of the Company. 本报告按本公司所制定之通用服务条款所编制发放。请注意本报告首页背面之此条款，本公司之义务、免责、管辖权均有明确规定，该条款也可向本公司索取。除非另有说明，本报告仅对来样负责。未经许可，不得部分复制本报告。

5 Floor, No.50 Jiuquan Road, Jianggan District, Hangzhou, China, 310019
web: www.tuv-nord.com/cn tel: +86(0)571 85386989 ext 212中国·杭州市江干区九环路50号5楼(杭州市质量技术监督检测院) 邮编: 310019
fax: +86(0)571 85386986 e-mail/报告查询: GPSC@tuv-nord.com

TEST REPORT

Reference No. : TRHZ1405755

Date : May. 30, 2014

Page No. : 2 of 106

TEST RESULTS:

Part No.	Part Description	Restricted Substances	Result of EDXRF (1)	Result of Chemical Testing (2) (mg/kg)	Conclusion on RoHS	Data Submitted / Resubmitted Date
1#	White plastic shell (remote control)	Pb Cd Hg Cr(VI) PBBs PBDEs	BL BL BL BL BL BL	--- --- --- --- --- ---	Comply Comply Comply Comply Comply Comply	May. 22, 2014
2#	Solder tin (PCB)	Pb Cd Hg Cr(VI) PBBs PBDEs	BL BL BL BL --- ---	--- --- --- --- --- ---	Comply Comply Comply Comply NA NA	May. 22, 2014
3#	PCB board (PCB)	Pb Cd Hg Cr(VI) PBBs PBDEs	BL BL BL BL IN IN	--- --- --- --- N.D. N.D.	Comply Comply Comply Comply Comply Comply	May. 22, 2014/ May. 27, 2014
4#	White plastic button (PCB)	Pb Cd Hg Cr(VI) PBBs PBDEs	BL BL BL BL IN IN	--- --- --- --- N.D. N.D.	Comply Comply Comply Comply Comply Comply	May. 22, 2014/ May. 27, 2014
5#	Golden metal contact sheet (PCB)	Pb Cd Hg Cr(VI) PBBs PBDEs	BL BL BL BL --- ---	--- --- --- --- --- ---	Comply Comply Comply Comply NA NA	May. 22, 2014

TEST REPORT

Reference No. : TRHZ1405755

Date : May. 30, 2014

Page No. : 3 of 106

Part No.	Part Description	Restricted Substances	Result of EDXRF (1)	Result of Chemical Testing (2) (mg/kg)	Conclusion on RoHS	Data Submitted / Resubmitted Date
6#	Black plastic framework (PCB)	Pb Cd Hg Cr(VI) PBBs PBDEs	BL BL BL BL IN IN	--- --- --- --- N.D. 526	Comply Comply Comply Comply Comply Comply	May. 22, 2014/ May. 27, 2014
7#	Red plastic shell (PCB)	Pb Cd Hg Cr(VI) PBBs PBDEs	BL BL BL BL IN IN	--- --- --- --- N.D. N.D.	Comply Comply Comply Comply Comply Comply	May. 22, 2014/ May. 27, 2014
8#	Gray rubber button (shell)	Pb Cd Hg Cr(VI) PBBs PBDEs	BL BL BL BL BL BL	--- --- --- --- --- ---	Comply Comply Comply Comply Comply Comply	May. 22, 2014
9#	Silvery electronic component (PCB)	Pb Cd Hg Cr(VI) PBBs PBDEs	BL BL BL BL BL BL	--- --- --- --- --- ---	Comply Comply Comply Comply Comply Comply	May. 22, 2014
10#	Color ring resistor (PCB)	Pb Cd Hg Cr(VI) PBBs PBDEs	BL BL BL BL BL BL	--- --- --- --- --- ---	Comply Comply Comply Comply Comply Comply	May. 22, 2014

TEST REPORT

Reference No. : TRHZ1405755

Date : May. 30, 2014

Page No. : 4 of 106

Part No.	Part Description	Restricted Substances	Result of EDXRF (1)	Result of Chemical Testing (2) (mg/kg)	Conclusion on RoHS	Data Submitted / Resubmitted Date
11#	Red LED (PCB)	Pb Cd Hg Cr(VI) PBBs PBDEs	BL BL BL BL IN IN	--- --- --- --- N.D. N.D.	Comply Comply Comply Comply Comply Comply	May. 22, 2014/ May. 27, 2014
12#	Glass diode (PCB)	Pb Cd Hg Cr(VI) PBBs PBDEs	IN BL BL BL --- ---	250357 ^② --- --- --- --- ---	Comply Comply Comply Comply NA NA	May. 22, 2014/ May. 27, 2014
13#	IC (PCB)	Pb Cd Hg Cr(VI) PBBs PBDEs	BL BL BL BL IN IN	--- --- --- --- N.D. N.D.	Comply Comply Comply Comply Comply Comply	May. 22, 2014/ May. 27, 2014
14#	Silvery metal spring (PCB)	Pb Cd Hg Cr(VI) PBBs PBDEs	BL BL BL BL --- ---	--- --- --- --- --- ---	Comply Comply Comply Comply NA NA	May. 22, 2014
15#	Silvery metal contact sheet (PCB)	Pb Cd Hg Cr(VI) PBBs PBDEs	BL BL BL BL --- ---	--- --- --- --- --- ---	Comply Comply Comply Comply NA NA	May. 22, 2014

TEST REPORT

Reference No. : TRHZ1405755

Date : May. 30, 2014

Page No. : 5 of 106

Part No.	Part Description	Restricted Substances	Result of EDXRF (1)	Result of Chemical Testing (2) (mg/kg)	Conclusion on RoHS	Data Submitted / Resubmitted Date
16#	Silvery metal screw (shell)	Pb Cd Hg Cr(VI) PBBs PBDEs	BL BL BL BL --- ---	--- --- --- --- --- ---	Comply Comply Comply Comply NA NA	May. 22, 2014
17#	White plastic shell (socket)	Pb Cd Hg Cr(VI) PBBs PBDEs	BL BL BL BL IN IN	--- --- --- --- N.D. N.D.	Comply Comply Comply Comply Comply Comply	May. 22, 2014/ May. 27, 2014
18#	Label (socket)	Pb Cd Hg Cr(VI) PBBs PBDEs	BL BL BL BL BL BL	--- --- --- --- --- ---	Comply Comply Comply Comply Comply Comply	May. 22, 2014
19#	Silvery metal spring (socket)	Pb Cd Hg Cr(VI) PBBs PBDEs	BL BL BL BL --- ---	--- --- --- --- --- ---	Comply Comply Comply Comply NA NA	May. 22, 2014
20#	Silvery metal foot (socket)	Pb Cd Hg Cr(VI) PBBs PBDEs	IN BL BL BL --- ---	21992 ^① --- --- --- --- ---	Comply Comply Comply Comply NA NA	May. 22, 2014/ May. 27, 2014

TEST REPORT

Reference No. : TRHZ1405755

Date : May. 30, 2014

Page No. : 6 of 106

Part No.	Part Description	Restricted Substances	Result of EDXRF (1)	Result of Chemical Testing (2) (mg/kg)	Conclusion on RoHS	Data Submitted / Resubmitted Date
21#	Silvery metal contact sheet (socket)	Pb Cd Hg Cr(VI) PBBs PBDEs	BL BL BL BL --- ---	--- --- --- --- --- ---	Comply Comply Comply Comply NA NA	May. 22, 2014
22#	Silvery metal fixed sheet (socket)	Pb Cd Hg Cr(VI) PBBs PBDEs	BL BL BL BL --- ---	--- --- --- --- --- ---	Comply Comply Comply Comply NA NA	May. 22, 2014
23#	Silvery metal fixed nail (socket)	Pb Cd Hg Cr(VI) PBBs PBDEs	BL BL BL BL --- ---	--- --- --- --- --- ---	Comply Comply Comply Comply NA NA	May. 22, 2014
24#	Transparent plastic lamp shade (socket)	Pb Cd Hg Cr(VI) PBBs PBDEs	BL BL BL BL BL BL	--- --- --- --- --- ---	Comply Comply Comply Comply Comply Comply	May. 22, 2014
25#	Coppery metal contact sheet (socket)	Pb Cd Hg Cr(VI) PBBs PBDEs	BL BL BL BL --- ---	--- --- --- --- --- ---	Comply Comply Comply Comply NA NA	May. 22, 2014

TEST REPORT

Reference No. : TRHZ1405755

Date : May. 30, 2014

Page No. : 7 of 106

Part No.	Part Description	Restricted Substances	Result of EDXRF (1)	Result of Chemical Testing (2) (mg/kg)	Conclusion on RoHS	Data Submitted / Resubmitted Date
26#	Red wire jacket (connecting line)	Pb Cd Hg Cr(VI) PBBs PBDEs	BL BL BL BL BL BL	--- --- --- --- --- ---	Comply Comply Comply Comply Comply Comply	May. 22, 2014
27#	Silvery metal wire (connecting line)	Pb Cd Hg Cr(VI) PBBs PBDEs	BL BL BL BL --- ---	--- --- --- --- --- ---	Comply Comply Comply Comply NA NA	May. 22, 2014
28#	Black shrinkable tube (connecting line)	Pb Cd Hg Cr(VI) PBBs PBDEs	BL BL BL BL BL BL	--- --- --- --- --- ---	Comply Comply Comply Comply Comply Comply	May. 22, 2014
29#	White solid gum (PCB)	Pb Cd Hg Cr(VI) PBBs PBDEs	BL BL BL BL BL BL	--- --- --- --- --- ---	Comply Comply Comply Comply Comply Comply	May. 22, 2014
30#	PCB (PCB)	Pb Cd Hg Cr(VI) PBBs PBDEs	BL BL BL BL IN IN	--- --- --- --- N.D. N.D.	Comply Comply Comply Comply Comply Comply	May. 22, 2014/ May. 27, 2014

TEST REPORT

Reference No. : TRHZ1405755

Date : May. 30, 2014

Page No. : 8 of 106

Part No.	Part Description	Restricted Substances	Result of EDXRF (1)	Result of Chemical Testing (2) (mg/kg)	Conclusion on RoHS	Data Submitted / Resubmitted Date
31#	Solder tin (PCB)	Pb Cd Hg Cr(VI) PBBs PBDEs	BL BL BL BL --- ---	--- --- --- --- --- ---	Comply Comply Comply Comply NA NA	May. 22, 2014
32#	IC (PCB)	Pb Cd Hg Cr(VI) PBBs PBDEs	BL BL BL BL IN IN	--- --- --- --- N.D. N.D.	Comply Comply Comply Comply Comply Comply	May. 22, 2014/ May. 27, 2014
33#	Color ring resistor (PCB)	Pb Cd Hg Cr(VI) PBBs PBDEs	BL BL BL BL BL BL	--- --- --- --- --- ---	Comply Comply Comply Comply Comply Comply	May. 22, 2014
34#	Chip diode (PCB)	Pb Cd Hg Cr(VI) PBBs PBDEs	BL BL BL BL IN IN	--- --- --- --- N.D. N.D.	Comply Comply Comply Comply Comply Comply	May. 22, 2014/ May. 27, 2014
35#	Glass diode (PCB)	Pb Cd Hg Cr(VI) PBBs PBDEs	IN BL BL BL --- ---	40178 [®] --- --- --- --- ---	Comply Comply Comply Comply NA NA	May. 22, 2014/ May. 27, 2014

TEST REPORT

Reference No. : TRHZ1405755

Date : May. 30, 2014

Page No. : 9 of 106

Part No.	Part Description	Restricted Substances	Result of EDXRF (1)	Result of Chemical Testing (2) (mg/kg)	Conclusion on RoHS	Data Submitted / Resubmitted Date
36#	Fuse (PCB)	Pb Cd Hg Cr(VI) PBBs PBDEs	BL BL BL BL --- ---	--- --- --- --- --- ---	Comply Comply Comply Comply NA NA	May. 22, 2014
37#	Electrolytic capacitor (PCB)	Pb Cd Hg Cr(VI) PBBs PBDEs	BL BL BL BL BL BL	--- --- --- --- --- ---	Comply Comply Comply Comply Comply Comply	May. 22, 2014
38#	Relay (PCB)	Pb Cd Hg Cr(VI) PBBs PBDEs	BL BL BL BL IN IN	--- --- --- --- N.D. N.D.	Comply Comply Comply Comply Comply Comply	May. 22, 2014/ May. 27, 2014
39#	Safety capacitor (PCB)	Pb Cd Hg Cr(VI) PBBs PBDEs	BL BL BL BL IN IN	--- --- --- --- N.D. N.D.	Comply Comply Comply Comply Comply Comply	May. 22, 2014/ May. 27, 2014
40#	Color ring resistor (PCB)	Pb Cd Hg Cr(VI) PBBs PBDEs	BL BL BL BL BL BL	--- --- --- --- --- ---	Comply Comply Comply Comply Comply Comply	May. 22, 2014

TEST REPORT

Reference No. : TRHZ1405755

Date : May. 30, 2014

Page No. : 10 of 106

Part No.	Part Description	Restricted Substances	Result of EDXRF (1)	Result of Chemical Testing (2) (mg/kg)	Conclusion on RoHS	Data Submitted / Resubmitted Date
41#	Glass diode (PCB)	Pb Cd Hg Cr(VI) PBBs PBDEs	IN BL BL BL --- ---	70018 ^② --- --- --- --- ---	Comply Comply Comply Comply NA NA	May. 22, 2014/ May. 27, 2014
42#	PCB (PCB)	Pb Cd Hg Cr(VI) PBBs PBDEs	BL BL BL BL IN IN	--- --- --- --- N.D. N.D.	Comply Comply Comply Comply Comply Comply	May. 22, 2014/ May. 27, 2014
43#	Green plastic slot (PCB)	Pb Cd Hg Cr(VI) PBBs PBDEs	BL BL BL BL BL BL	--- --- --- --- --- ---	Comply Comply Comply Comply Comply Comply	May. 22, 2014
44#	Golden metal screw (PCB)	Pb Cd Hg Cr(VI) PBBs PBDEs	IN BL BL BL --- ---	29922 ^① --- --- --- --- ---	Comply Comply Comply Comply NA NA	May. 22, 2014/ May. 27, 2014
45#	Yellow wax (PCB)	Pb Cd Hg Cr(VI) PBBs PBDEs	BL BL BL BL BL BL	--- --- --- --- --- ---	Comply Comply Comply Comply Comply Comply	May. 22, 2014

TEST REPORT

Reference No. : TRHZ1405755

Date : May. 30, 2014

Page No. : 11 of 106

Part No.	Part Description	Restricted Substances	Result of EDXRF (1)	Result of Chemical Testing (2) (mg/kg)	Conclusion on RoHS	Data Submitted / Resubmitted Date
46#	Black plastic fixed sheet (PCB)	Pb Cd Hg Cr(VI) PBBs PBDEs	BL BL BL BL IN IN	--- --- --- --- N.D. N.D.	Comply Comply Comply Comply Comply Comply	May. 22, 2014/ May. 27, 2014
47#	PCB (55608*36)					
47#-1	PCB	Pb Cd Hg Cr(VI) PBBs PBDEs	BL BL BL BL IN IN	--- --- --- --- N.D. N.D.	Comply Comply Comply Comply Comply Comply	May. 22, 2014/ May. 27, 2014
47#-2	Beige plastic plug (PCB)	Pb Cd Hg Cr(VI) PBBs PBDEs	BL BL BL BL BL BL	--- --- --- --- --- ---	Comply Comply Comply Comply Comply Comply	May. 22, 2014
47#-3	White plastic framework (PCB)	Pb Cd Hg Cr(VI) PBBs PBDEs	BL BL BL BL BL BL	--- --- --- --- --- ---	Comply Comply Comply Comply Comply Comply	May. 22, 2014
47#-4	Silvery metal contact sheet (PCB)	Pb Cd Hg Cr(VI) PBBs PBDEs	IN BL BL BL --- ---	N.D. --- --- --- --- ---	Comply Comply Comply Comply NA NA	May. 22, 2014/ May. 27, 2014

TEST REPORT

Reference No. : TRHZ1405755

Date : May. 30, 2014

Page No. : 12 of 106

Part No.	Part Description	Restricted Substances	Result of EDXRF (1)	Result of Chemical Testing (2) (mg/kg)	Conclusion on RoHS	Data Submitted / Resubmitted Date
47#-5	Black wire jacket (PCB)	Pb Cd Hg Cr(VI) PBBs PBDEs	BL BL BL BL BL BL	--- --- --- --- --- ---	Comply Comply Comply Comply Comply Comply	May. 22, 2014
47#-6	Silvery metal wire (PCB)	Pb Cd Hg Cr(VI) PBBs PBDEs	BL BL BL BL --- ---	--- --- --- --- --- ---	Comply Comply Comply Comply NA NA	May. 22, 2014
47#-7	Coppery metal contact sheet (PCB)	Pb Cd Hg Cr(VI) PBBs PBDEs	IN BL BL BL --- ---	1141 ^① --- --- --- --- ---	Comply Comply Comply Comply NA NA	May. 22, 2014/ May. 27, 2014
47#-8	Safety capacitor (PCB)	Pb Cd Hg Cr(VI) PBBs PBDEs	BL BL BL BL IN IN	--- --- --- --- N.D. N.D.	Comply Comply Comply Comply Comply Comply	May. 22, 2014/ May. 27, 2014
47#-9	Relay (PCB)	Pb Cd Hg Cr(VI) PBBs PBDEs	BL BL BL BL IN IN	--- --- --- --- N.D. N.D.	Comply Comply Comply Comply Comply Comply	May. 22, 2014/ May. 27, 2014

TEST REPORT

Reference No. : TRHZ1405755

Date : May. 30, 2014

Page No. : 13 of 106

Part No.	Part Description	Restricted Substances	Result of EDXRF (1)	Result of Chemical Testing (2) (mg/kg)	Conclusion on RoHS	Data Submitted / Resubmitted Date
47#-10	Electrolytic capacitor (PCB)	Pb Cd Hg Cr(VI) PBBs PBDEs	BL BL BL BL BL BL	--- --- --- --- --- ---	Comply Comply Comply Comply Comply Comply	May. 22, 2014
47#-11	Glass diode (PCB)	Pb Cd Hg Cr(VI) PBBs PBDEs	IN BL BL BL --- ---	62138 ^② --- --- --- --- ---	Comply Comply Comply Comply NA NA	May. 22, 2014/ May. 27, 2014
47#-12	Black rubber sheath (PCB)	Pb Cd Hg Cr(VI) PBBs PBDEs	BL BL BL BL BL BL	--- --- --- --- --- ---	Comply Comply Comply Comply Comply Comply	May. 22, 2014
47#-13	Color ring resistor (PCB)	Pb Cd Hg Cr(VI) PBBs PBDEs	BL BL BL BL BL BL	--- --- --- --- --- ---	Comply Comply Comply Comply Comply Comply	May. 22, 2014
47#-14	Solder tin (PCB)	Pb Cd Hg Cr(VI) PBBs PBDEs	BL BL BL BL --- ---	--- --- --- --- --- ---	Comply Comply Comply Comply NA NA	May. 22, 2014

TEST REPORT

Reference No. : TRHZ1405755

Date : May. 30, 2014

Page No. : 14 of 106

Part No.	Part Description	Restricted Substances	Result of EDXRF (1)	Result of Chemical Testing (2) (mg/kg)	Conclusion on RoHS	Data Submitted / Resubmitted Date
47#-15	Coppery metal contact sheet (PCB)	Pb Cd Hg Cr(VI) PBBs PBDEs	BL BL BL BL --- ---	--- --- --- --- --- ---	Comply Comply Comply Comply NA NA	May. 22, 2014
47#-16	IC (PCB)	Pb Cd Hg Cr(VI) PBBs PBDEs	BL BL BL BL IN IN	--- --- --- --- N.D. N.D.	Comply Comply Comply Comply Comply Comply	May. 22, 2014/ May. 27, 2014
47#-17	Chip diode (PCB)	Pb Cd Hg Cr(VI) PBBs PBDEs	BL BL BL BL IN IN	--- --- --- --- N.D. N.D.	Comply Comply Comply Comply Comply Comply	May. 22, 2014/ May. 27, 2014
47#-18	Glass diode (PCB)	Pb Cd Hg Cr(VI) PBBs PBDEs	IN BL BL BL --- ---	56311 [®] --- --- --- --- ---	Comply Comply Comply Comply NA NA	May. 22, 2014/ May. 27, 2014
47#-19	Chip triode (PCB)	Pb Cd Hg Cr(VI) PBBs PBDEs	BL BL BL BL IN IN	--- --- --- --- N.D. N.D.	Comply Comply Comply Comply Comply Comply	May. 22, 2014/ May. 27, 2014

TEST REPORT

Reference No. : TRHZ1405755

Date : May. 30, 2014

Page No. : 15 of 106

Part No.	Part Description	Restricted Substances	Result of EDXRF (1)	Result of Chemical Testing (2) (mg/kg)	Conclusion on RoHS	Data Submitted / Resubmitted Date
47#-20	PCB (PCB)	Pb Cd Hg Cr(VI) PBBs PBDEs	BL BL BL BL IN IN	--- --- --- --- N.D. N.D.	Comply Comply Comply Comply Comply Comply	May. 22, 2014/ May. 27, 2014
47#-21	Green plastic slot (PCB)	Pb Cd Hg Cr(VI) PBBs PBDEs	BL BL BL BL BL BL	--- --- --- --- --- ---	Comply Comply Comply Comply Comply Comply	May. 22, 2014
47#-22	Golden metal screw (PCB)	Pb Cd Hg Cr(VI) PBBs PBDEs	IN BL BL BL --- ---	26531 ^① --- --- --- --- ---	Comply Comply Comply Comply NA NA	May. 22, 2014/ May. 27, 2014
47#-23	Yellow wax (PCB)	Pb Cd Hg Cr(VI) PBBs PBDEs	BL BL BL BL BL BL	--- --- --- --- --- ---	Comply Comply Comply Comply Comply Comply	May. 22, 2014
48#	PCB (55608*10)					
48#-1	PCB	Pb Cd Hg Cr(VI) PBBs PBDEs	BL BL BL BL IN IN	--- --- --- --- N.D. N.D.	Comply Comply Comply Comply Comply Comply	May. 22, 2014/ May. 27, 2014

TEST REPORT

Reference No. : TRHZ1405755

Date : May. 30, 2014

Page No. : 16 of 106

Part No.	Part Description	Restricted Substances	Result of EDXRF (1)	Result of Chemical Testing (2) (mg/kg)	Conclusion on RoHS	Data Submitted / Resubmitted Date
48#-2	Relay (PCB)	Pb Cd Hg Cr(VI) PBBs PBDEs	BL BL BL BL IN IN	--- --- --- --- N.D. N.D.	Comply Comply Comply Comply Comply Comply	May. 22, 2014/ May. 27, 2014
48#-3	Safety capacitor (PCB)	Pb Cd Hg Cr(VI) PBBs PBDEs	BL BL BL BL IN IN	--- --- --- --- N.D. N.D.	Comply Comply Comply Comply Comply Comply	May. 22, 2014/ May. 27, 2014
48#-4	Electrolytic capacitor (PCB)	Pb Cd Hg Cr(VI) PBBs PBDEs	BL BL BL BL BL BL	--- --- --- --- --- ---	Comply Comply Comply Comply Comply Comply	May. 22, 2014
48#-5	Glass diode (PCB)	Pb Cd Hg Cr(VI) PBBs PBDEs	IN BL BL BL --- ---	65091 [®] --- --- --- --- ---	Comply Comply Comply Comply NA NA	May. 22, 2014/ May. 27, 2014
48#-6	Fuse (PCB)	Pb Cd Hg Cr(VI) PBBs PBDEs	BL BL BL BL --- ---	--- --- --- --- --- ---	Comply Comply Comply Comply NA NA	May. 22, 2014

TEST REPORT

Reference No. : TRHZ1405755

Date : May. 30, 2014

Page No. : 17 of 106

Part No.	Part Description	Restricted Substances	Result of EDXRF (1)	Result of Chemical Testing (2) (mg/kg)	Conclusion on RoHS	Data Submitted / Resubmitted Date
48#-7	Black rubber sheath (PCB)	Pb Cd Hg Cr(VI) PBBs PBDEs	BL BL BL BL BL BL	--- --- --- --- --- ---	Comply Comply Comply Comply Comply Comply	May. 22, 2014
48#-8	Color ring resistor (PCB)	Pb Cd Hg Cr(VI) PBBs PBDEs	BL BL BL BL BL BL	--- --- --- --- --- ---	Comply Comply Comply Comply Comply Comply	May. 22, 2014
48#-9	IC (PCB)	Pb Cd Hg Cr(VI) PBBs PBDEs	BL BL BL BL IN IN	--- --- --- --- N.D. N.D.	Comply Comply Comply Comply Comply Comply	May. 22, 2014/ May. 27, 2014
48#-10	Chip diode (PCB)	Pb Cd Hg Cr(VI) PBBs PBDEs	BL BL BL BL IN IN	--- --- --- --- N.D. N.D.	Comply Comply Comply Comply Comply Comply	May. 22, 2014/ May. 27, 2014
48#-11	Glass diode (PCB)	Pb Cd Hg Cr(VI) PBBs PBDEs	IN BL BL BL --- ---	41727 [®] --- --- --- --- ---	Comply Comply Comply Comply NA NA	May. 22, 2014/ May. 27, 2014

TEST REPORT

Reference No. : TRHZ1405755

Date : May. 30, 2014

Page No. : 18 of 106

Part No.	Part Description	Restricted Substances	Result of EDXRF (1)	Result of Chemical Testing (2) (mg/kg)	Conclusion on RoHS	Data Submitted / Resubmitted Date
48#-12	Solder tin (PCB)	Pb Cd Hg Cr(VI) PBBs PBDEs	BL BL BL BL --- ---	--- --- --- --- --- ---	Comply Comply Comply Comply NA NA	May. 22, 2014
48#-13	Black plastic slot (PCB)	Pb Cd Hg Cr(VI) PBBs PBDEs	BL BL BL BL IN IN	--- --- --- --- N.D. N.D.	Comply Comply Comply Comply Comply Comply	May. 22, 2014/ May. 27, 2014
48#-14	PCB (PCB)	Pb Cd Hg Cr(VI) PBBs PBDEs	BL BL BL BL IN IN	--- --- --- --- N.D. N.D.	Comply Comply Comply Comply Comply Comply	May. 22, 2014/ May. 27, 2014
48#-15	Green plastic slot (PCB)	Pb Cd Hg Cr(VI) PBBs PBDEs	BL BL BL BL BL BL	--- --- --- --- --- ---	Comply Comply Comply Comply Comply Comply	May. 22, 2014
48#-16	Yellow wax (PCB)	Pb Cd Hg Cr(VI) PBBs PBDEs	BL BL BL BL BL BL	--- --- --- --- --- ---	Comply Comply Comply Comply Comply Comply	May. 22, 2014

TEST REPORT

Reference No. : TRHZ1405755

Date : May. 30, 2014

Page No. : 19 of 106

Part No.	Part Description	Restricted Substances	Result of EDXRF (1)	Result of Chemical Testing (2) (mg/kg)	Conclusion on RoHS	Data Submitted / Resubmitted Date
48#-17	Golden metal screw (PCB)	Pb Cd Hg Cr(VI) PBBs PBDEs	IN BL BL BL --- ---	29012 ^① --- --- --- --- ---	Comply Comply Comply Comply NA NA	May. 22, 2014/ May. 27, 2014
49#	PCB (55008*36)					
49#-1	PCB	Pb Cd Hg Cr(VI) PBBs PBDEs	BL BL BL BL IN IN	--- --- --- --- N.D. N.D.	Comply Comply Comply Comply Comply Comply	May. 22, 2014/ May. 27, 2014
49#-2	Beige plastic plug (PCB)	Pb Cd Hg Cr(VI) PBBs PBDEs	BL BL BL BL BL BL	--- --- --- --- --- ---	Comply Comply Comply Comply Comply Comply	May. 22, 2014
49#-3	White plastic framework (PCB)	Pb Cd Hg Cr(VI) PBBs PBDEs	BL BL BL BL BL BL	--- --- --- --- --- ---	Comply Comply Comply Comply Comply Comply	May. 22, 2014
49#-4	Silvery metal contact sheet (PCB)	Pb Cd Hg Cr(VI) PBBs PBDEs	BL BL BL BL --- ---	--- --- --- --- --- ---	Comply Comply Comply Comply NA NA	May. 22, 2014

TEST REPORT

Reference No. : TRHZ1405755

Date : May. 30, 2014

Page No. : 20 of 106

Part No.	Part Description	Restricted Substances	Result of EDXRF (1)	Result of Chemical Testing (2) (mg/kg)	Conclusion on RoHS	Data Submitted / Resubmitted Date
49#-5	Black wire jacket (PCB)	Pb Cd Hg Cr(VI) PBBs PBDEs	BL BL BL BL BL BL	--- --- --- --- --- ---	Comply Comply Comply Comply Comply Comply	May. 22, 2014
49#-6	Silvery metal wire (PCB)	Pb Cd Hg Cr(VI) PBBs PBDEs	BL BL BL BL --- ---	--- --- --- --- --- ---	Comply Comply Comply Comply NA NA	May. 22, 2014
49#-7	Coppery metal contact sheet (PCB)	Pb Cd Hg Cr(VI) PBBs PBDEs	IN BL BL BL --- ---	1206 ^① --- --- --- --- ---	Comply Comply Comply Comply NA NA	May. 22, 2014/ May. 27, 2014
49#-8	Solder tin (PCB)	Pb Cd Hg Cr(VI) PBBs PBDEs	BL BL BL BL --- ---	--- --- --- --- --- ---	Comply Comply Comply Comply NA NA	May. 22, 2014
49#-9	Coppery metal sheet (PCB)	Pb Cd Hg Cr(VI) PBBs PBDEs	BL BL BL BL --- ---	--- --- --- --- --- ---	Comply Comply Comply Comply NA NA	May. 22, 2014

TEST REPORT

Reference No. : TRHZ1405755

Date : May. 30, 2014

Page No. : 21 of 106

Part No.	Part Description	Restricted Substances	Result of EDXRF (1)	Result of Chemical Testing (2) (mg/kg)	Conclusion on RoHS	Data Submitted / Resubmitted Date
49#-10	Black rubber sheath (PCB)	Pb Cd Hg Cr(VI) PBBs PBDEs	BL BL BL BL BL BL	--- --- --- --- --- ---	Comply Comply Comply Comply Comply Comply	May. 22, 2014
49#-11	Color ring resistor (PCB)	Pb Cd Hg Cr(VI) PBBs PBDEs	BL BL BL BL BL BL	--- --- --- --- --- ---	Comply Comply Comply Comply Comply Comply	May. 22, 2014
49#-12	Safety capacitor (PCB)	Pb Cd Hg Cr(VI) PBBs PBDEs	BL BL BL BL IN IN	--- --- --- --- N.D. N.D.	Comply Comply Comply Comply Comply Comply	May. 22, 2014/ May. 27, 2014
49#-13	Relay (PCB)	Pb Cd Hg Cr(VI) PBBs PBDEs	BL BL BL BL IN IN	--- --- --- --- N.D. N.D.	Comply Comply Comply Comply Comply Comply	May. 22, 2014/ May. 27, 2014
49#-14	Glass diode (PCB)	Pb Cd Hg Cr(VI) PBBs PBDEs	IN BL BL BL --- ---	67268 [®] --- --- --- --- ---	Comply Comply Comply Comply NA NA	May. 22, 2014/ May. 27, 2014

TEST REPORT

Reference No. : TRHZ1405755

Date : May. 30, 2014

Page No. : 22 of 106

Part No.	Part Description	Restricted Substances	Result of EDXRF (1)	Result of Chemical Testing (2) (mg/kg)	Conclusion on RoHS	Data Submitted / Resubmitted Date
49#-15	Electrolytic capacitor (PCB)	Pb Cd Hg Cr(VI) PBBs PBDEs	BL BL BL BL BL BL	--- --- --- --- --- ---	Comply Comply Comply Comply Comply Comply	May. 22, 2014
49#-16	Red LED (PCB)	Pb Cd Hg Cr(VI) PBBs PBDEs	BL BL BL BL IN IN	--- --- --- --- N.D. N.D.	Comply Comply Comply Comply Comply Comply	May. 22, 2014/ May. 27, 2014
49#-17	IC (PCB)	Pb Cd Hg Cr(VI) PBBs PBDEs	BL BL BL BL IN IN	--- --- --- --- N.D. N.D.	Comply Comply Comply Comply Comply Comply	May. 22, 2014/ May. 27, 2014
49#-18	Chip diode (PCB)	Pb Cd Hg Cr(VI) PBBs PBDEs	BL BL BL BL IN IN	--- --- --- --- N.D. N.D.	Comply Comply Comply Comply Comply Comply	May. 22, 2014/ May. 27, 2014
49#-19	Glass diode (PCB)	Pb Cd Hg Cr(VI) PBBs PBDEs	IN BL BL BL --- ---	52700 [®] --- --- --- --- ---	Comply Comply Comply Comply NA NA	May. 22, 2014/ May. 27, 2014

TEST REPORT

Reference No. : TRHZ1405755

Date : May. 30, 2014

Page No. : 23 of 106

Part No.	Part Description	Restricted Substances	Result of EDXRF (1)	Result of Chemical Testing (2) (mg/kg)	Conclusion on RoHS	Data Submitted / Resubmitted Date
49#-20	PCB (PCB)	Pb Cd Hg Cr(VI) PBBs PBDEs	BL BL BL BL IN IN	--- --- --- --- N.D. N.D.	Comply Comply Comply Comply Comply Comply	May. 22, 2014/ May. 27, 2014
49#-21	Yellow wax (PCB)	Pb Cd Hg Cr(VI) PBBs PBDEs	BL BL BL BL BL BL	--- --- --- --- --- ---	Comply Comply Comply Comply Comply Comply	May. 22, 2014
49#-22	Green plastic slot (PCB)	Pb Cd Hg Cr(VI) PBBs PBDEs	BL BL BL BL BL BL	--- --- --- --- --- ---	Comply Comply Comply Comply Comply Comply	May. 22, 2014
49#-23	Golden metal screw (PCB)	Pb Cd Hg Cr(VI) PBBs PBDEs	IN BL BL BL --- ---	28152 ^① --- --- --- --- ---	Comply Comply Comply Comply NA NA	May. 22, 2014/ May. 27, 2014
50#	PCB (50027)					
50#-1	PCB	Pb Cd Hg Cr(VI) PBBs PBDEs	BL BL BL BL IN IN	--- --- --- --- N.D. N.D.	Comply Comply Comply Comply Comply Comply	May. 22, 2014/ May. 27, 2014

TEST REPORT

Reference No. : TRHZ1405755

Date : May. 30, 2014

Page No. : 24 of 106

Part No.	Part Description	Restricted Substances	Result of EDXRF (1)	Result of Chemical Testing (2) (mg/kg)	Conclusion on RoHS	Data Submitted / Resubmitted Date
50#-2	Silvery metal contact sheet (PCB)	Pb Cd Hg Cr(VI) PBBs PBDEs	BL BL BL BL --- ---	--- --- --- --- --- ---	Comply Comply Comply Comply NA NA	May. 22, 2014
50#-3	Silvery metal spring (PCB)	Pb Cd Hg Cr(VI) PBBs PBDEs	BL BL BL BL --- ---	--- --- --- --- --- ---	Comply Comply Comply Comply NA NA	May. 22, 2014
50#-4	Red LED (PCB)	Pb Cd Hg Cr(VI) PBBs PBDEs	BL BL BL BL IN IN	--- --- --- --- N.D. N.D.	Comply Comply Comply Comply Comply Comply	May. 22, 2014/ May. 27, 2014
50#-5	Golden metal pin (PCB)	Pb Cd Hg Cr(VI) PBBs PBDEs	BL BL BL BL --- ---	--- --- --- --- --- ---	Comply Comply Comply Comply NA NA	May. 22, 2014
50#-6	Color ring resistor (PCB)	Pb Cd Hg Cr(VI) PBBs PBDEs	BL BL BL BL BL BL	--- --- --- --- --- ---	Comply Comply Comply Comply Comply Comply	May. 22, 2014

TEST REPORT

Reference No. : TRHZ1405755

Date : May. 30, 2014

Page No. : 25 of 106

Part No.	Part Description	Restricted Substances	Result of EDXRF (1)	Result of Chemical Testing (2) (mg/kg)	Conclusion on RoHS	Data Submitted / Resubmitted Date
50#-7	Color ring resistor (PCB)	Pb Cd Hg Cr(VI) PBBs PBDEs	BL BL BL BL BL BL	--- --- --- --- --- ---	Comply Comply Comply Comply Comply Comply	May. 22, 2014
50#-8	Electron component (PCB)	Pb Cd Hg Cr(VI) PBBs PBDEs	BL BL BL BL BL BL	--- --- --- --- --- ---	Comply Comply Comply Comply Comply Comply	May. 22, 2014
50#-9	Solder tin (PCB)	Pb Cd Hg Cr(VI) PBBs PBDEs	BL BL BL BL --- ---	--- --- --- --- --- ---	Comply Comply Comply Comply NA NA	May. 22, 2014
50#-10	Chip triode (PCB)	Pb Cd Hg Cr(VI) PBBs PBDEs	BL BL BL BL IN IN	--- --- --- --- N.D. N.D.	Comply Comply Comply Comply Comply Comply	May. 22, 2014/ May. 27, 2014
50#-11	IC (PCB)	Pb Cd Hg Cr(VI) PBBs PBDEs	BL BL BL BL IN IN	--- --- --- --- N.D. N.D.	Comply Comply Comply Comply Comply Comply	May. 22, 2014/ May. 27, 2014

***** To be continued *****

TEST REPORT

Reference No. : TRHZ1405755

Date : May. 30, 2014

Page No. : 26 of 106

Remark:

- (1) (a) It is the result on total Br while test item on restricted substances is PBBs/PBDEs. It is the result on total Cr while test item on restricted substances is Cr⁶⁺.
 (b) Results are obtained by EDXRF for primary screening, and further chemical testing by ICP-OES (for Cd, Pb, Hg), UV-Vis (for Cr⁶⁺) and GC/MS (for PBBs, PBDEs) is recommended to be performed, if the concentration exceeds the below warning value according to IEC62321-3-1:2013 (unit: mg/kg)

Element	Polymer	Metal	Composite Materials
Cd	BL≤(70-3σ)<X<(130+3σ) ≤OL	BL≤(70-3σ)<X<(130+3σ) ≤OL	LOD<X<(150+3σ) ≤OL
Pb	BL≤(700-3σ)<X<(1300+3σ) ≤OL	BL≤(700-3σ)<X<(1300+3σ) ≤OL	BL≤(500-3σ)<X<(1500+3σ) ≤OL
Hg	BL≤(700-3σ)<X<(1300+3σ) ≤OL	BL≤(700-3σ)<X<(1300+3σ) ≤OL	BL≤(500-3σ)<X<(1500+3σ) ≤OL
Br	BL≤(300-3σ)<X	--	BL≤(250-3σ)<X
Cr	BL≤(700-3σ)<X	BL≤(700-3σ)<X	BL≤(500-3σ)<X

(c) BL = Below Limit, OL = Over Limit, IN = Inconclusive, LOD = Limit of Detection, -- = Not Regulated, NA = Not Applicable.

(d) The XRF screening test for RoHS elements – The reading may be different to the actual content in the sample be of non-uniformity composition.

(2) (a) mg/kg = ppm = 0.0001%, N.D.= Not Detected (<MDL), --- = Not Conducted.

(b) Unit and Method Detection Limit (MDL) in wet chemical test

Test Items	Pb	Cd	Hg
Units	mg/kg	mg/kg	mg/kg
MDL	2	2	2

The MDL for single compound of PBBs & PBDEs is 5 mg/kg and MDL of Cr⁶⁺ for polymer & composite sample is 2 mg/kg.

(c) According to IEC 62321:2008, result on Cr⁶⁺ for metal sample is shown as Positive/Negative.

Positive = Presence of Cr⁶⁺ coating, Negative = Absence of Cr⁶⁺ coating.

(d) ①Copper alloy containing up to 4 % lead by weight(RoHS Exemption 6(c)).

②Electrical and electronic components containing lead in a glass or ceramic other than dielectricceramic in capacitors, e.g. piezoelectronic devices, or in a glass or ceramic matrix compound(RoHS Exemption 7(c)-I).

***** To be continued *****



TEST REPORT

Reference No. : TRHZ1405755

Date : May. 30, 2014

Page No. : 27 of 106

(3) RoHS Exemptions

Exemptions	
RoHS Directive 2011/65/EU ANNEX III	
Exemption Items	Expires Date
1, Mercury in single capped (compact) fluorescent lamps not exceeding (per burner):	
1(a), For general lighting purposes < 30 W:2.5 mg	
1(b), For general lighting purposes ≥ 30 W and < 50W:3.5mg	
1(c), For general lighting purposes ≥ 50 W and < 150 W: 5 mg	
1(d), For general lighting purposes ≥ 150 W: 15 mg	
1(e), For general lighting purposes with circular or square structural shape and tube diameter ≤ 17 mm: 7 mg	
1(f), For special purposes: 5 mg	
1(g), For general lighting purposes < 30 W with a lifetime equal or above 20 000 h: 3,5 mg	Expires on 31 December 2017
2(a), Mercury in double-capped linear fluorescent lamps for general lighting purposes not exceeding (per lamp):	
2(a)(1), Tri-band phosphor with normal lifetime and a tube diameter < 9 mm (e.g. T2): 4 mg	
2(a)(2), Tri-band phosphor with normal lifetime and a tube diameter ≥ 9 mm and ≤ 17 mm (e.g. T5): 3 mg	
2(a)(3), Tri-band phosphor with normal lifetime and a tube diameter > 17 mm and ≤ 28 mm (e.g. T8):3.5mg	
2(a)(4), Tri-band phosphor with normal lifetime and a tube diameter > 28 mm (e.g. T12): 3.5 mg	
2(a)(5), Tri-band phosphor with long lifetime (≥ 25 000 h): 5 mg	
2(b), Mercury in other fluorescent lamps not exceeding (per lamp):	
2(b)(2), Non-linear halophosphate lamps (all diameters): 15 mg	Expires on 13 April 2016
2(b)(3), Non-linear tri-band phosphor lamps with tube diameter > 17 mm (e.g. T9):15mg	
2(b)(4), Lamps for other general lighting and special purposes (e.g. induction lamps):15mg	
3, Mercury in cold cathode fluorescent lamps and external electrode fluorescent lamps (CCFL and EEFL) for special purposes not exceeding (per lamp):	
3(a), Short length (≤ 500 mm):3.5mg	
3(b), Medium length (> 500 mm and ≤ 1 500 mm):5mg	
3(c), Long length (> 1 500 mm):13mg	
4(a), Mercury in other low pressure discharge lamps (per lamp):15mg	
4(b), Mercury in High Pressure Sodium (vapour) lamps for general lighting purposes not exceeding (per burner) in lamps with improved colour rendering index Ra > 60:	
4(b) -I, P ≤ 155 W:30mg	
4(b) -II, 155 W < P ≤ 405 W:40mg	
4(b) -III, P > 405 W:40mg	
4(c), Mercury in other High Pressure Sodium (vapour) lamps for general lighting purposes not exceeding (per burner):	
4(c)-I, P ≤ 155 W:25mg	

TÜV NORD (Hangzhou) CO.,LTD.

Member of TÜV NORD Group

This Test Report is issued by the Company Subject to its General Conditions of Service printed overleaf or available on request. Attention is drawn to the limitations of liability, indemnification and jurisdictional policies defined therein. The results shown in this Test report refer only to the sample(s) tested unless otherwise stated. This test report shall not be reproduced, except in full, without written approval of the Company. 本报告按本公司所制定之通用服务条款所编制发放。请注意本报告首页背面之此条款，本公司之义务、免责、管辖权均有明确规定，该条款也可向本公司索取。除非另有说明，本报告仅对来样负责。未经许可，不得部分复制本报告。

TEST REPORT

Reference No. : TRHZ1405755

Date : May. 30, 2014

Page No. : 28 of 106

Exemptions	
RoHS Directive 2011/65/EU ANNEX III	
Exemption Items	Expires Date
4(c)-II, 155 W < P ≤ 405 W:30mg	
4(c)-III, P > 405 W:40mg	
4(d), Mercury in High Pressure Mercury (vapour) lamps (HPMV)	Expires on 13 April 2015
4(e), Mercury in metal halide lamps (MH)	
4(f), Mercury in other discharge lamps for special purposes not specifically mentioned in this Annex	
5(a), Lead in glass of cathode ray tubes	
5(b), Lead in glass of fluorescent tubes not exceeding 0,2 % by weight	
6(a), Lead as an alloying element in steel for machining purposes and in galvanized steel containing up to 0,35 % lead by weight	
6(b), Lead as an alloying element in aluminium containing up to 0,4 % lead by weight	
6(c), Copper alloy containing up to 4 % lead by weight	
7(a), Lead in high melting temperature type solders (i.e. lead- based alloys containing 85 % by weight or more lead)	
7(b), Lead in solders for servers, storage and storage array systems, network infrastructure equipment for switching, signalling, transmission, and network management for telecommunications	
7(c)-I, Electrical and electronic components containing lead in a glass or ceramic other than dielectric ceramic in capacitors, e.g. piezoelectronic devices, or in a glass or ceramic matrix compound	
7(c)-II, Lead in dielectric ceramic in capacitors for a rated voltage of 125 V AC or 250 V DC or higher	
7(c)-III, Lead in dielectric ceramic in capacitors for a rated voltage of less than 125 V AC or 250 V DC	Expires on 1 January 2013 and after that date may be used in spare parts for EEE placed on the market before 1 January 2013
7(c)-IV, Lead in PZT based dielectric ceramic materials for capacitors being part of integrated circuits or discrete semiconductors	Expires on 21 July 2016
8(a), Cadmium and its compounds in one shot pellet type thermal cut-offs	Expires on 1 January 2012 and after that date may be used in spare parts for EEE placed on the market before 1 January 2012
8(b), Cadmium and its compounds in electrical contacts	
9, Hexavalent chromium as an anticorrosion agent of the carbon steel cooling system in absorption refrigerators up to 0,75 % by weight in the cooling solution	
9(b), Lead in bearing shells and bushes for refrigerant-containing compressors for heating, ventilation, air conditioning and refrigeration (HVACR) applications	
11(a), Lead used in C-press compliant pin connector systems	May be used in spare parts for EEE placed on the market before 24 September 2010
11(b), Lead used in other than C-press compliant pin connector systems	Expires on 1 January 2013 and after that date may be used in spare parts for EEE placed on the market before 1 January 2013

TÜV NORD (Hangzhou) CO.,LTD.

Member of TÜV NORD Group

This Test Report is issued by the Company Subject to its General Conditions of Service printed overleaf or available on request. Attention is drawn to the limitations of liability, indemnification and jurisdictional policies defined therein. The results shown in this Test report refer only to the sample(s) tested unless otherwise stated. This test report shall not be reproduced, except in full, without written approval of the Company. 本报告按本公司所制定之通用服务条款所编制发放。请注意本报告首页背面之此条款，本公司之义务、免责、管辖权均有明确规定，该条款也可向本公司索取。除非另有说明，本报告仅对来样负责。未经许可，不得部分复制本报告。

TEST REPORT

Reference No. : TRHZ1405755

Date : May. 30, 2014

Page No. : 29 of 106

Exemptions	
RoHS Directive 2011/65/EU ANNEX III	
Exemption Items	Expires Date
12, Lead as a coating material for the thermal conduction module C-ring	May be used in spare parts for EEE placed on the market before 24 September 2010
13(a), Lead in white glasses used for optical applications	
13(b), Cadmium and lead in filter glasses and glasses used for reflectance standards	
14, Lead in solders consisting of more than two elements for the connection between the pins and the package of microprocessors with a lead content of more than 80 % and less than 85 % by weight	Expires on 1 January 2011 and after that date may be used in spare parts for EEE placed on the market before 1 January 2011
15, Lead in solders to complete a viable electrical connection between semiconductor die and carrier within integrated circuit flip chip packages	
17, Lead halide as radiant agent in high intensity discharge (HID) lamps used for professional reprography applications	
18(b), Lead as activator in the fluorescent powder (1 % lead by weight or less) of discharge lamps when used as sun tanning lamps containing phosphors such as BSP (BaSi ₂ O ₅ :Pb)	
21, Lead and cadmium in printing inks for the application of enamels on glasses, such as borosilicate and soda lime glasses	
23, Lead in finishes of fine pitch components other than connectors with a pitch of 0,65 mm and less	May be used in spare parts for EEE placed on the market before 24 September 2010
24, Lead in solders for the soldering to machined through hole discoidal and planar array ceramic multilayer capacitors	
25, Lead oxide in surface conduction electron emitter displays (SED) used in structural elements, notably in the seal frit and frit ring	
29, Lead bound in crystal glass as defined in Annex I (Categories 1, 2, 3 and 4) of Council Directive 69/493/EEC ⁽¹⁾	
30, Cadmium alloys as electrical/mechanical solder joints to electrical conductors located directly on the voice coil in transducers used in high-powered loudspeakers with sound pressure levels of 100 dB (A) and more	
31, Lead in soldering materials in mercury free flat fluorescent lamps (which e.g. are used for liquid crystal displays, design or industrial lighting)	
32, Lead oxide in seal frit used for making window assemblies for Argon and Krypton laser tubes	
33, Lead in solders for the soldering of thin copper wires of 100 μm diameter and less in power transformers	
34, Lead in cermet-based trimmer potentiometer elements	
37, Lead in the plating layer of high voltage diodes on the basis of a zinc borate glass body	
38, Cadmium and cadmium oxide in thick film pastes used on aluminium bonded beryllium oxide	
39, Cadmium in colour converting II-VI LEDs (< 10 μg Cd per mm ² of light-emitting area) for use in solid state illumination or display systems	Expires on 1 July 2014

TÜV NORD (Hangzhou) CO.,LTD.

Member of TÜV NORD Group

This Test Report is issued by the Company Subject to its General Conditions of Service printed overleaf or available on request. Attention is drawn to the limitations of liability, indemnification and jurisdictional policies defined therein. The results shown in this Test report refer only to the sample(s) tested unless otherwise stated. This test report shall not be reproduced, except in full, without written approval of the Company. 本报告按本公司所制定之通用服务条款所编制发放。请注意本报告首页背面之此条款，本公司之义务、免责、管辖权均有明确规定，该条款也可向本公司索取。除非另有说明，本报告仅对来样负责。未经许可，不得部分复制本报告。

TEST REPORT

Reference No. : TRHZ1405755

Date : May. 30, 2014

Page No. : 30 of 106

Exemptions	
RoHS Directive 2011/65/EU ANNEX III	
Exemption Items	Expires Date
Note: 1. ⁽¹⁾ OJ L 326, 29.12.1969, p.36. 2. For the purposes of Directive 2011/65/EU, a maximum concentration value of 0,1 % by weight in homogeneous materials for lead, mercury, hexavalent chromium, polybrominated biphenyls (PBB) and polybrominated diphenyl ethers (PBDE) and of 0,01 % by weight in homogeneous materials for cadmium shall be tolerated.	

Exemptions	
RoHS Directive 2011/65/EU ANNEX IV	
Equipment onizing or detecting onizing radiation	
Exemption Items	Expires Date
1. Lead, cadmium and mercury in detectors for onizing radiation.	
2. Lead bearings in X-ray tubes.	
3. Lead in electromagnetic radiation amplification devices: micro-channel plate and capillary plate.	
4. Lead in glass frit of X-ray tubes and image intensifiers and lead in glass frit binder for assembly of gas lasers and for vacuum tubes that convert electromagnetic radiation into electrons.	
5. Lead in shielding for onizing radiation.	
6. Lead in X-ray test objects.	
7. Lead stearate X-ray diffraction crystals.	
8. Radioactive cadmium isotope source for portable X-ray fluorescence spectrometers. Sensors, detectors and electrodes	
8.1a. Lead and cadmium in ion selective electrodes including glass of pH electrodes.	
8.1b. Lead anodes in electrochemical oxygen sensors.	
8.1c. Lead, cadmium and mercury in infra-red light detectors.	
8.1d. Mercury in reference electrodes: low chloride mercury chloride, mercury sulphate and mercury oxide.	
9. Cadmium in helium-cadmium lasers.	
10. Lead and cadmium in atomic absorption spectroscopy lamps.	
11. Lead in alloys as a superconductor and thermal conductor in MRI.	
12. Lead and cadmium in metallic bonds creating superconducting magnetic circuits in MRI, SQUID, NMR (Nuclear Magnetic Resonance) or FTMS (Fourier Transform Mass Spectrometer) detectors.	Expires on 30 June 2021
13. Lead in counterweights.	
14. Lead in single crystal piezoelectric materials for ultrasonic transducers.	
15. Lead in solders for bonding to ultrasonic transducers.	
16. Mercury in very high accuracy capacitance and loss measurement bridges and in high frequency RF switches and relays in monitoring and control instruments not exceeding 20 mg of mercury per switch or relay.	
17. Lead in solders in portable emergency defibrillators.	
18. Lead in solders of high performance infrared imaging modules to detect in the range 8-14 μm.	

TÜV NORD (Hangzhou) CO.,LTD.

Member of TÜV NORD Group

This Test Report is issued by the Company Subject to its General Conditions of Service printed overleaf or available on request. Attention is drawn to the limitations of liability, indemnification and jurisdictional policies defined therein. The results shown in this Test report refer only to the sample(s) tested unless otherwise stated. This test report shall not be reproduced, except in full, without written approval of the Company. 本报告按本公司所制定之通用服务条款所编制发放。请注意本报告首页背面之此条款，本公司之义务、免责、管辖权均有明确规定，该条款也可向本公司索取。除非另有说明，本报告仅对来样负责。未经许可，不得部分复制本报告。



TEST REPORT

Reference No. : TRHZ1405755

Date : May. 30, 2014

Page No. : 31 of 106

Exemptions	
RoHS Directive 2011/65/EU ANNEX IV Equipment ionizing or detecting ionizing radiation	
Exemption Items	Expires Date
19. Lead in Liquid crystal on silicon (LCoS) displays.	
20. Cadmium in X-ray measurement filters.	
21. Cadmium in phosphor coatings in image intensifiers for X-ray images until 31 December 2019 and in spare parts for X-ray systems placed on the EU market before 1 January 2020.	
22. Lead acetate marker for use in stereotactic head frames for use with CT and MRI and in positioning systems for gamma beam and particle therapy equipment.	Expires on 30 June 2021.
23. Lead as an alloying element for bearings and wear surfaces in medical equipment exposed to ionising radiation.	Expires on 30 June 2021
24. Lead enabling vacuum tight connections between aluminium and steel in X-ray image intensifiers.	Expires on 31 December 2019
25. Lead in the surface coatings of pin connector systems requiring nonmagnetic connectors which are used durably at a temperature below – 20 °C under normal operating and storage conditions.	Expires on 30 June 2021
26. Lead in — solders on printed circuit boards, — termination coatings of electrical and electronic components and coatings of printed circuit boards, — solders for connecting wires and cables, — solders connecting transducers and sensors, that are used durably at a temperature below – 20 °C under normal operating and storage conditions.	Expires on 30 June 2021
27. Lead in — solders, — termination coatings of electrical and electronic components and printed circuit boards, — connections of electrical wires, shields and enclosed connectors, which are used in magnetic fields within the sphere of 1 m radius around the isocentre of the magnet in medical magnetic resonance imaging equipment, including patient monitors designed to be used within this sphere, or magnetic fields within 1 m distance from the external surfaces of cyclotron magnets, magnets for beam transport and beam direction control applied for particle therapy.	Expires on 30 June 2020
28. Lead in solders for mounting cadmium telluride and cadmium zinc telluride digital array detectors to printed circuit boards.	Expires on 31 December 2017
29. Lead in alloys, as a superconductor or thermal conductor, used in cryo-cooler cold heads and/or in cryo-cooled cold probes and/or in cryo-cooled equipotential bonding systems, in medical devices (category 8) and/or in industrial monitoring and control instruments.	Expires on 30 June 2021
30. Hexavalent chromium in alkali dispensers used to create photocathodes in X-ray image intensifiers until 31 December 2019 and in spare parts for X-ray systems placed on the EU market before 1 January 2020.	



TEST REPORT

Reference No. : TRHZ1405755

Date : May. 30, 2014

Page No. : 32 of 106

Exemptions	
RoHS Directive 2011/65/EU ANNEX IV Equipment ionizing or detecting ionizing radiation	
Exemption Items	Expires Date
31. Lead, cadmium and hexavalent chromium in reused spare parts, recovered from medical devices placed on the market before 22 July 2014 and used in category 8 equipment placed on the market before 22 July 2021, provided that reuse takes place in auditable closed-loop business-to-business return systems, and that the reuse of parts is notified to the consumer.	Expires on 21 July 2021
32. Lead in solders on printed circuit boards of detectors and data acquisition units for Positron Emission Tomographs which are integrated into Magnetic Resonance Imaging equipment.	Expires on 31 December 2019
33. Lead in solders on populated printed circuit boards used in Directive 93/42/EEC class IIa and IIb mobile medical devices other than portable emergency defibrillators.	Expires on 30 June 2016 for class IIa and on 31 December 2020 for class IIb.
34. Lead as an activator in the fluorescent powder of discharge lamps when used for extracorporeal photopheresis lamps containing BSP (BaSi2O5:Pb) phosphors.	Expires on 22 July 2021

***** To be continued *****

TEST REPORT

Reference No. : TRHZ1405755

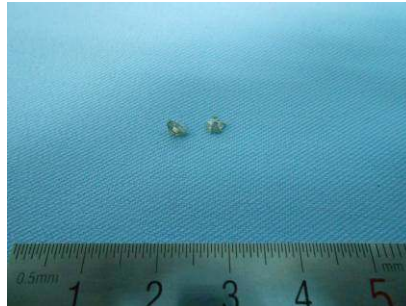
Date : May. 30, 2014

Page No. : 33 of 106

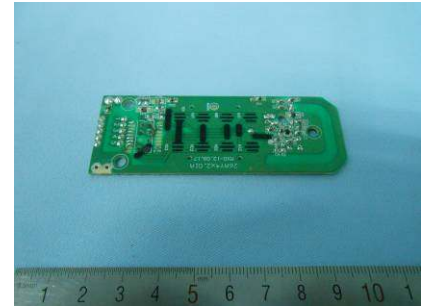
SAMPLE PHOTOS



1#



2#



3#



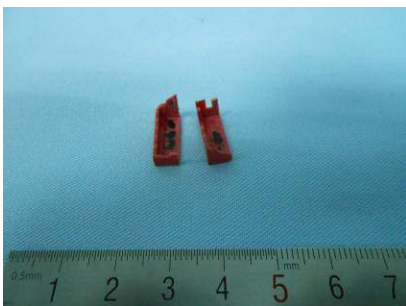
4#



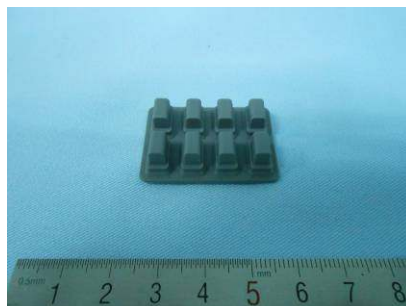
5#



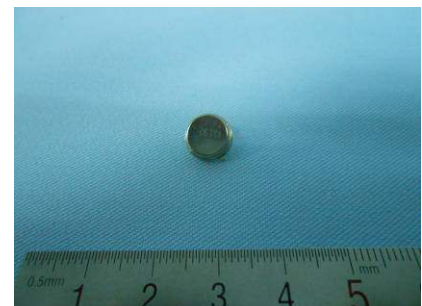
6#



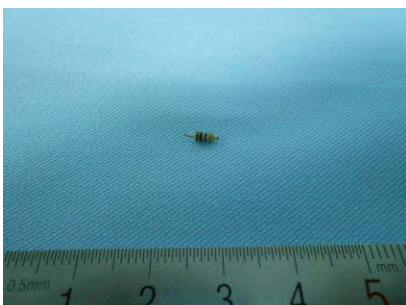
7#



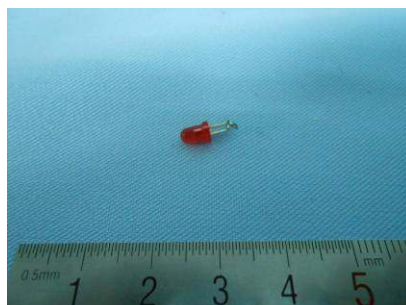
8#



9#



10#



11#



12#

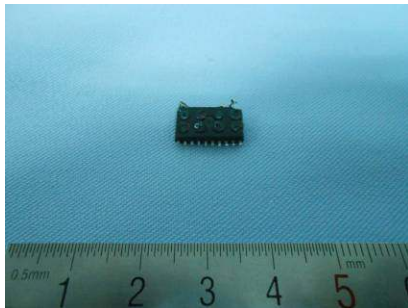
***** To be continued *****

TEST REPORT

Reference No. : TRHZ1405755

Date : May. 30, 2014

Page No. : 34 of 106



13#



14#



15#



16#



17#



18#



19#



20#



21#



22#



23#



24#

***** To be continued *****

TEST REPORT

Reference No. : TRHZ1405755

Date : May. 30, 2014

Page No. : 35 of 106



25#



26#



27#



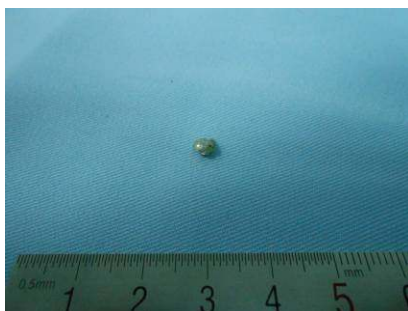
28#



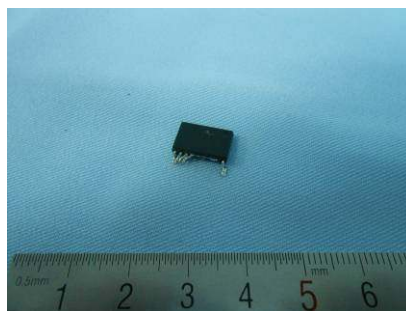
29#



30#



31#



32#



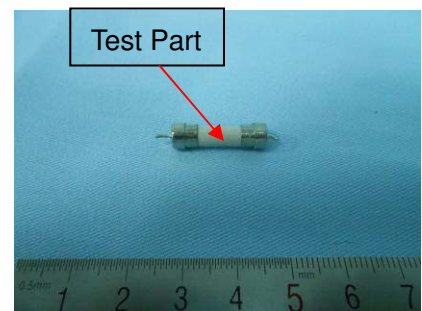
33#



34#



35#



36#

***** To be continued *****

TEST REPORT

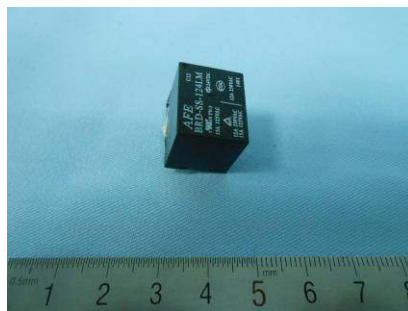
Reference No. : TRHZ1405755

Date : May. 30, 2014

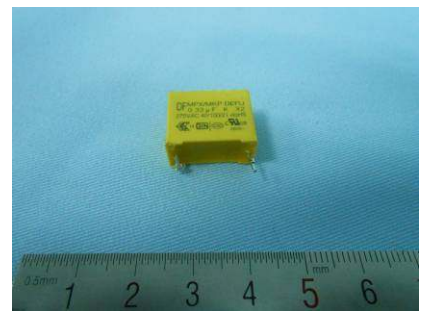
Page No. : 36 of 106



37#



38#



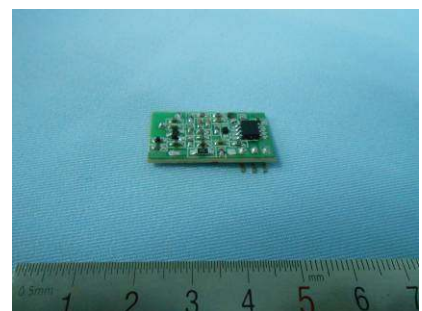
39#



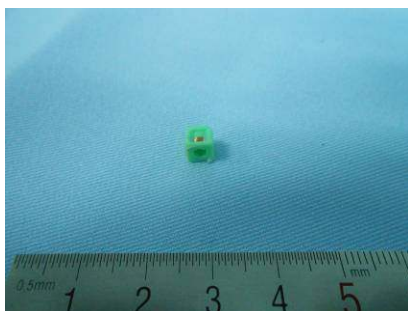
40#



41#



42#



43#



44#



45#



46#



47#



47#-1

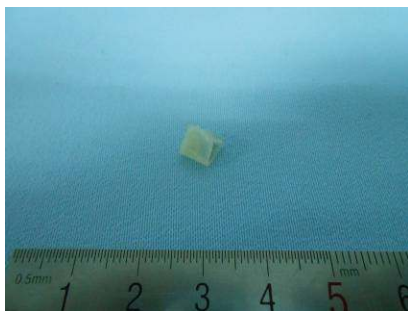
***** To be continued *****

TEST REPORT

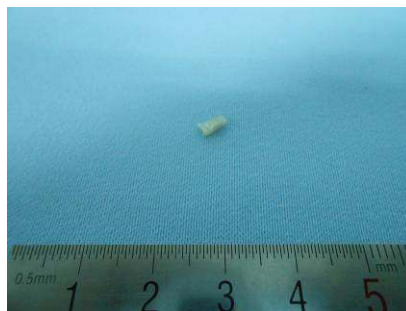
Reference No. : TRHZ1405755

Date : May. 30, 2014

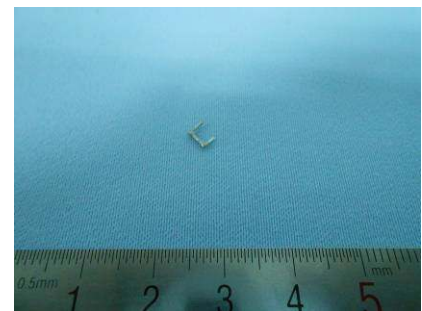
Page No. : 37 of 106



47#-2



47#-3



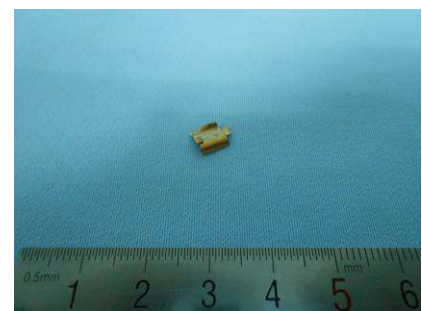
47#-4



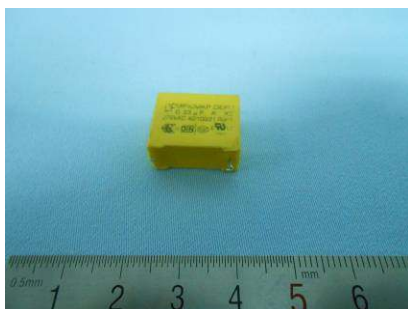
47#-5



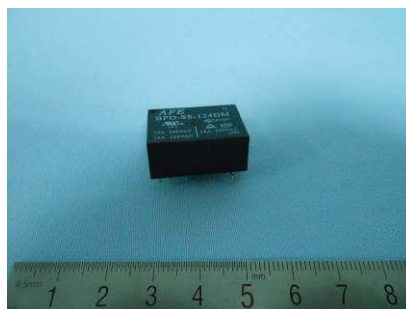
47#-6



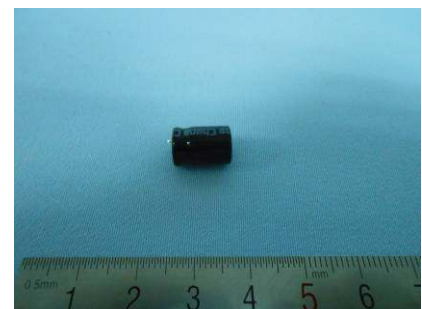
47#-7



47#-8



47#-9



47#-10



47#-11



47#-12



47#-13

***** To be continued *****

TEST REPORT

Reference No. : TRHZ1405755

Date : May. 30, 2014

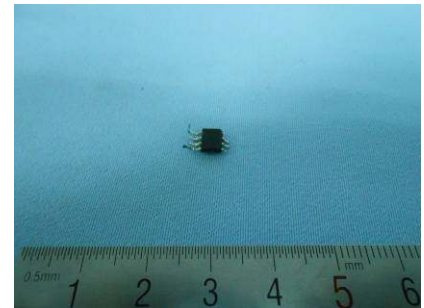
Page No. : 38 of 106



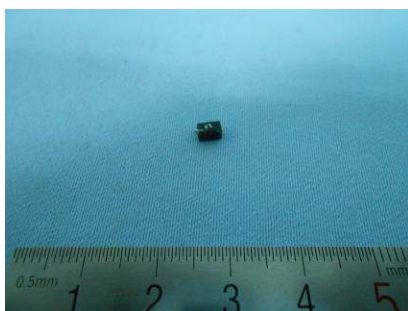
47#-14



47#-15



47#-16



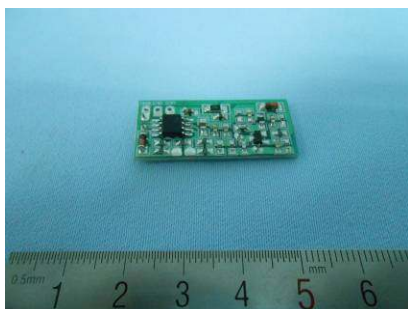
47#-17



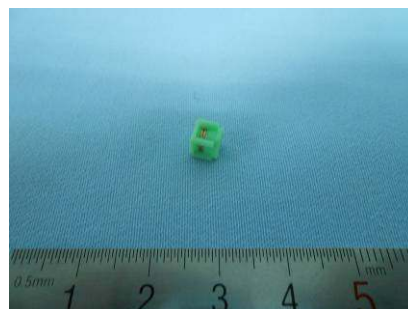
47#-18



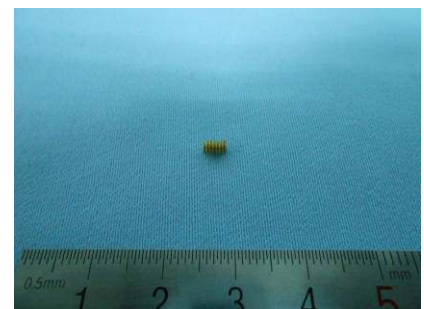
47#-19



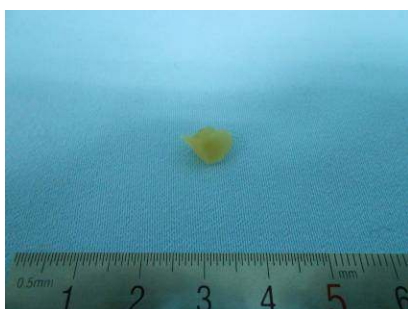
47#-20



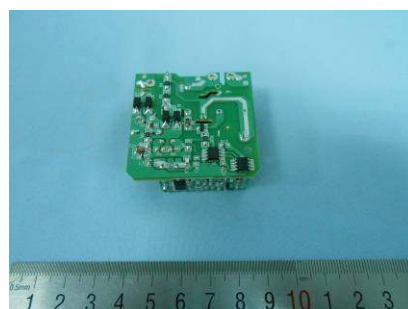
47#-21



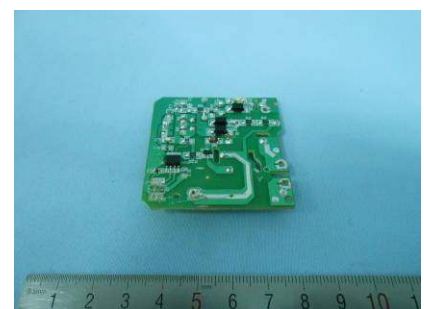
47#-22



47#-23



48#



48#-1

***** To be continued *****

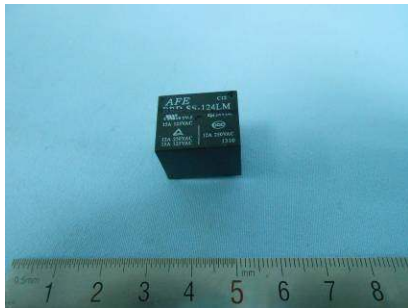


TEST REPORT

Reference No. : TRHZ1405755

Date : May. 30, 2014

Page No. : 39 of 106



48#-2



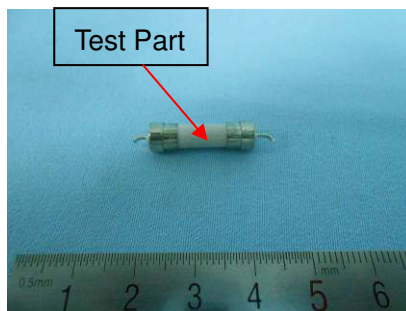
48#-3



48#-4



48#-5



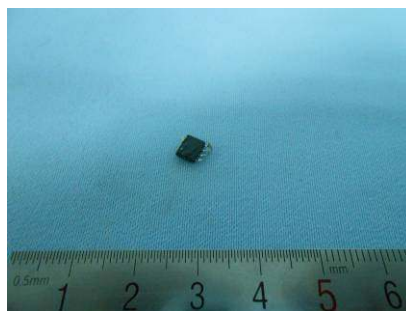
48#-6



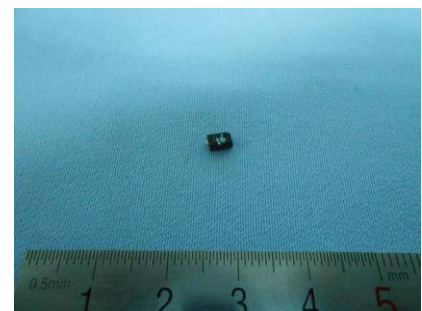
48#-7



48#-8



48#-9



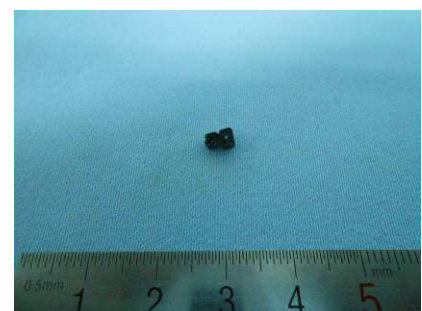
48#-10



48#-11



48#-12



48#-13

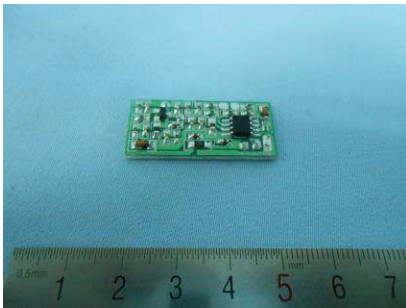
***** To be continued *****

TEST REPORT

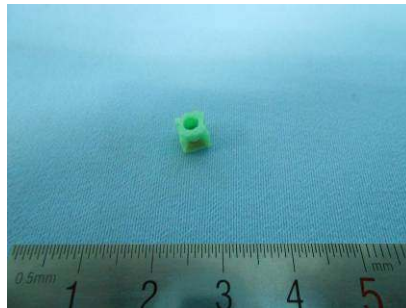
Reference No. : TRHZ1405755

Date : May. 30, 2014

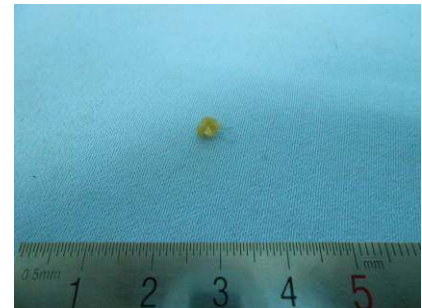
Page No. : 40 of 106



48#-14



48#-15



48#-16



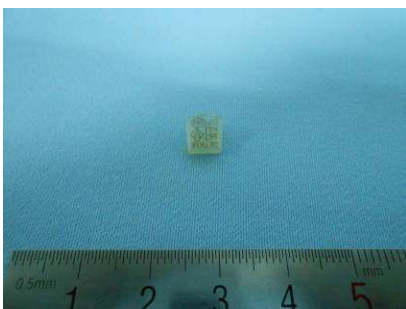
48#-17



49#



49#-1



49#-2



49#-3



49#-4



49#-5



49#-6



49#-7

***** To be continued *****

TEST REPORT

Reference No. : TRHZ1405755

Date : May. 30, 2014

Page No. : 41 of 106



49#-8



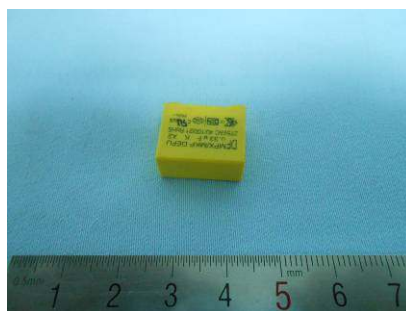
49#-9



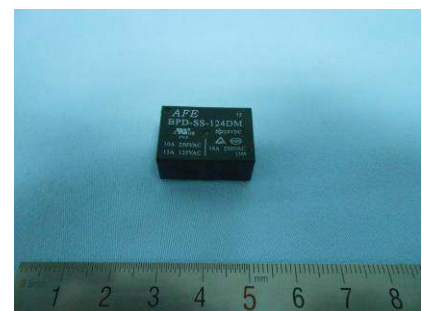
49#-10



49#-11



49#-12



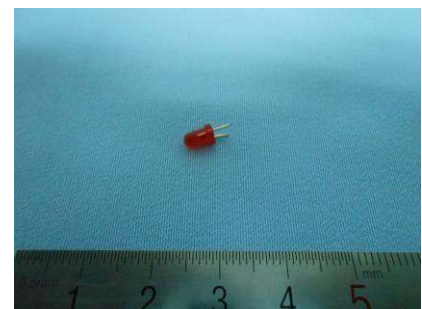
49#-13



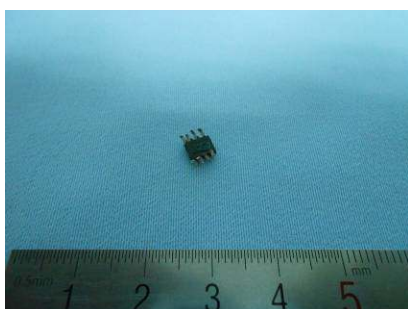
49#-14



49#-15



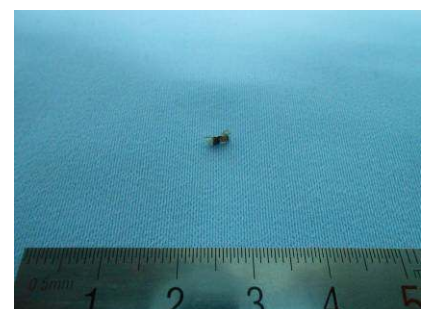
49#-16



49#-17



49#-18



49#-19

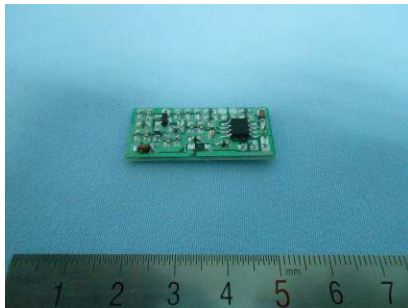
***** To be continued *****

TEST REPORT

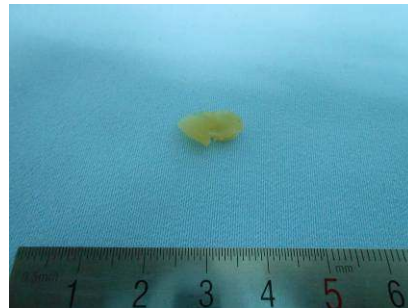
Reference No. : TRHZ1405755

Date : May. 30, 2014

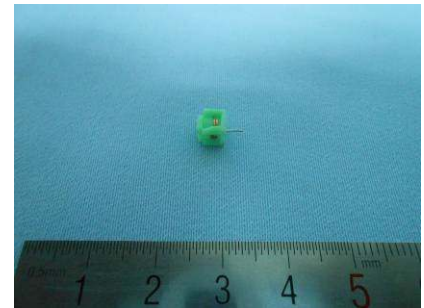
Page No. : 42 of 106



49#-20



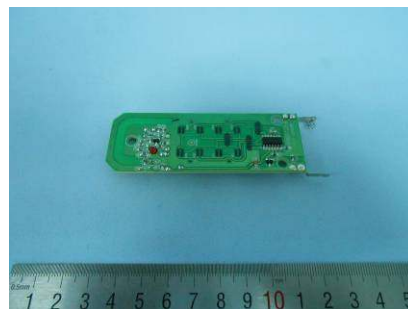
49#-21



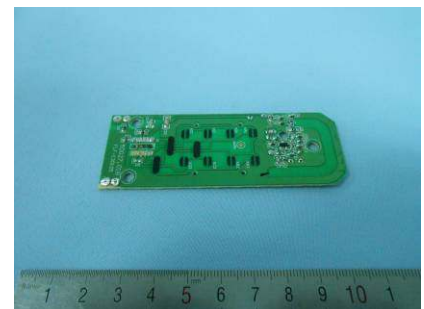
49#-22



49#-23



50#



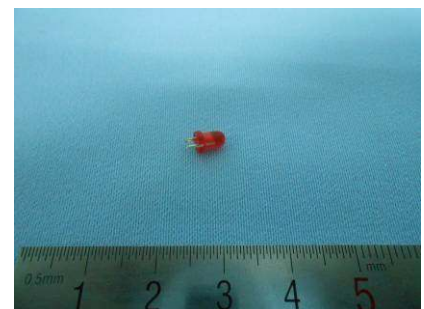
50#-1



50#-2



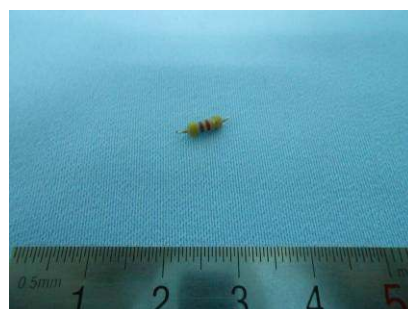
50#-3



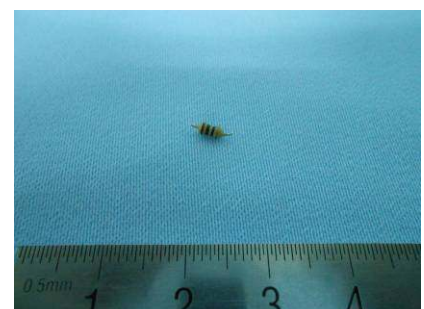
50#-4



50#-5



50#-6



50#-7

***** To be continued *****

TEST REPORT

Reference No. : TRHZ1405755

Date : May. 30, 2014

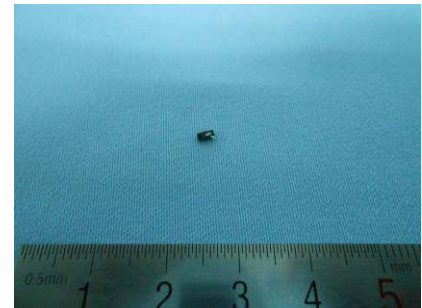
Page No. : 43 of 106



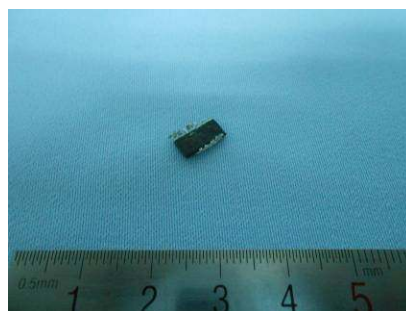
50#-8



50#-9



50#-10



50#-11

***** To be continued *****

TEST REPORT

Reference No. : TRHZ1405755

Date : May. 30, 2014

Page No. : 44 of 106

MAIN MODEL'S PRODUCT PHOTOS



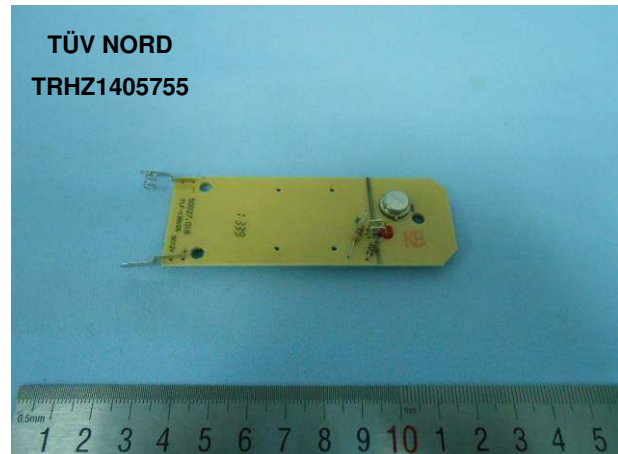
***** To be continued *****

TEST REPORT

Reference No. : TRHZ1405755

Date : May. 30, 2014

Page No. : 45 of 106



***** To be continued *****

TEST REPORT

Reference No. : TRHZ1405755

Date : May. 30, 2014

Page No. : 46 of 106

The photos were submitted by the client, only for reference.



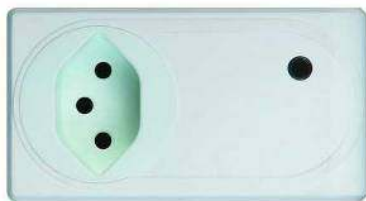
2601



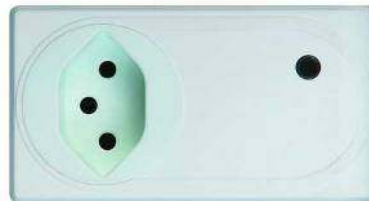
2601-200



2601-3600



2601CH-200



2601CH-1000



2601DK-200



2601DK-1000



2627B-1000



2627C-1000



2601FR-200



2602IT-1000



2603

***** To be continued *****

TEST REPORT

Reference No. : TRHZ1405755

Date : May. 30, 2014

Page No. : 47 of 106

The photos were submitted by the client, only for reference.



2603-200



2603CH-200



2603CH-1000



2603IT-1000



2603DK-200



2605



2605-200



2605-3600



2605CH-200



2605CH-1000



2605DK-200



2627D-1000

***** To be continued *****

TEST REPORT

Reference No. : TRHZ1405755

Date : May. 30, 2014

Page No. : 48 of 106

The photos were submitted by the client, only for reference.



2605DK-1000



2605FR-200



2605FR-3600



2606-3600



2606



2606-200



2605IT-1000



2606CH-200



2606CH-1000



2606DK-200



2606DK-1000



2607DK-1000

***** To be continued *****

TEST REPORT

Reference No. : TRHZ1405755

Date : May. 30, 2014

Page No. : 49 of 106

The photos were submitted by the client, only for reference.



2607FR-200



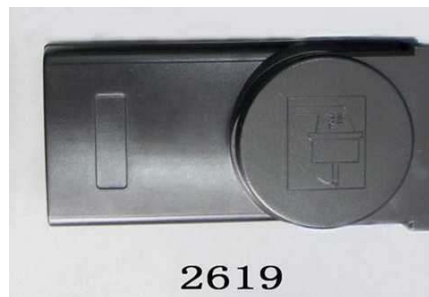
2607FR-3600



2607IT-1000



2612



2619



2621



2627-1000



2627A-1000



2627FA-1000



2627FB-1000



2627FC-1000



2627FD-1000

***** To be continued *****

TÜV NORD (Hangzhou) CO.,LTD.

Member of TÜV NORD Group

This Test Report is issued by the Company Subject to its General Conditions of Service printed overleaf or available on request. Attention is drawn to the limitations of liability, indemnification and jurisdictional policies defined therein. The results shown in this Test report refer only to the sample(s) tested unless otherwise stated. This test report shall not be reproduced, except in full, without written approval of the Company. 本报告按本公司所制定之通用服务条款所编制发放。请注意本报告首页背面之此条款，本公司之义务、免责、管辖权均有明确规定，该条款也可向本公司索取。除非另有说明，本报告仅对来样负责。未经许可，不得部分复制本报告。

5 Floor, No. 50 Jiujuan Road, Jiangan District, Hangzhou, China, 310019
web: www.tuv-nord.com/cn tel: +86(0)571 85386989 ext 212

中国·杭州市江干区九环路50号5楼(杭州市质量技术监督检测院) 邮编: 310019
fax: +86(0)571 85386986 e-mail/报告查询: GPSC@tuv-nord.com

TEST REPORT

Reference No. : TRHZ1405755

Date : May. 30, 2014

Page No. : 50 of 106

The photos were submitted by the client, only for reference.



2627FE-1000



2627FQ-1000



2627Q-1000



2631



2632



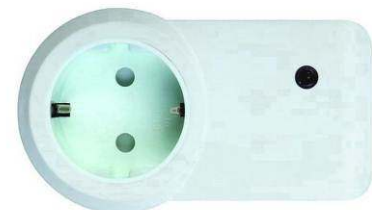
51001CHX3



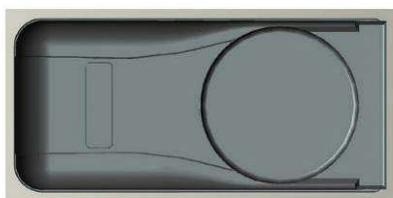
51001CHX23



2606IT-1000



53003X2



55607X10



51001DKX3



51001DKX36

***** To be continued *****

TÜV NORD (Hangzhou) CO.,LTD.

Member of TÜV NORD Group

This Test Report is issued by the Company Subject to its General Conditions of Service printed overleaf or available on request. Attention is drawn to the limitations of liability, indemnification and jurisdictional policies defined therein. The results shown in this Test report refer only to the sample(s) tested unless otherwise stated. This test report shall not be reproduced, except in full, without written approval of the Company. 本报告按本公司所制定之通用服务条款所编制发放。请注意本报告首页背面之此条款，本公司之义务、免责、管辖权均有明确规定，该条款也可向本公司索取。除非另有说明，本报告仅对来样负责。未经许可，不得部分复制本报告。

5 Floor, No. 50 Jiuquan Road, Jianggan District, Hangzhou, China, 310019
web: www.tuv-nord.com/cn tel: +86(0)571 85386989 ext 212

中国·杭州市江干区九环路50号5楼(杭州市质量技术监督检测院) 邮编: 310019
fax: +86(0)571 85386986 e-mail/报告查询: GPSC@tuv-nord.com

TEST REPORT

Reference No. : TRHZ1405755

Date : May. 30, 2014

Page No. : 51 of 106

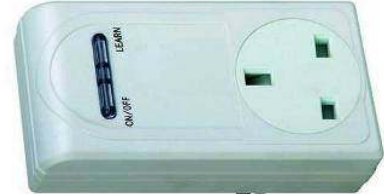
The photos were submitted by the client, only for reference.



51001FRX3



51001FRX36



51001GBX3



51001GBX30



51001X3



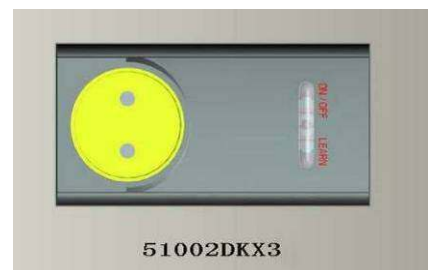
51001X36



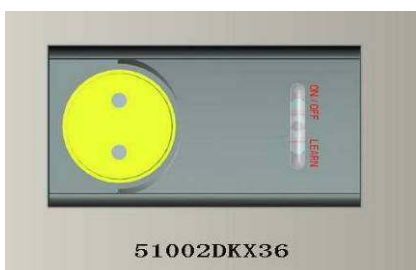
51002CHX3



51002CHX23



51002DKX3



51002DKX36



51002FRX3



51002FRX36

***** To be continued *****

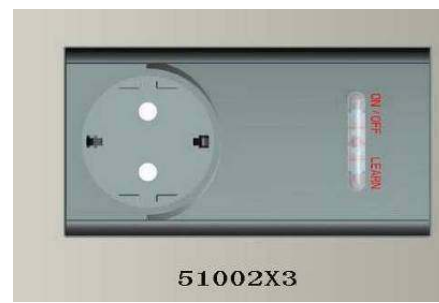
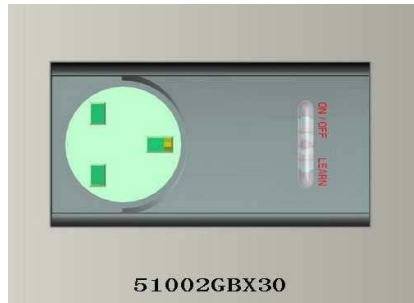
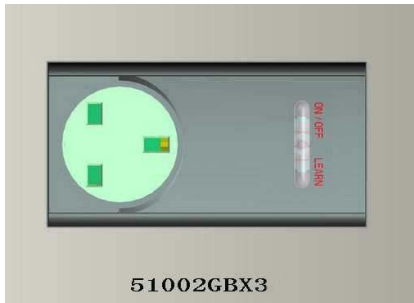
TEST REPORT

Reference No. : TRHZ1405755

Date : May. 30, 2014

Page No. : 52 of 106

The photos were submitted by the client, only for reference.



***** To be continued *****

TEST REPORT

Reference No. : TRHZ1405755

Date : May. 30, 2014

Page No. : 53 of 106

The photos were submitted by the client, only for reference.



51003X3



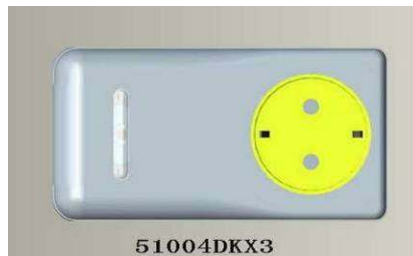
51003X36



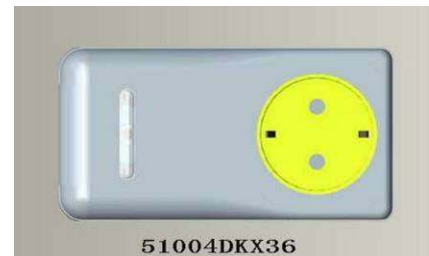
51004CHX3



51004CHX23



51004DKX3



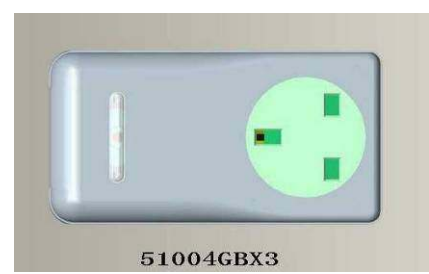
51004DKX36



51004FRX3



51004FRX36



51004GBX3



51004GBX30



51004X3



51004X36

***** To be continued *****

TEST REPORT

Reference No. : TRHZ1405755

Date : May. 30, 2014

Page No. : 54 of 106

The photos were submitted by the client, only for reference.



51011AUSX25



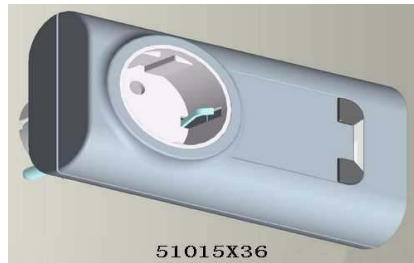
51011X36



51012AUSX25



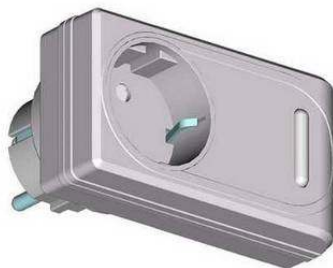
51012X36



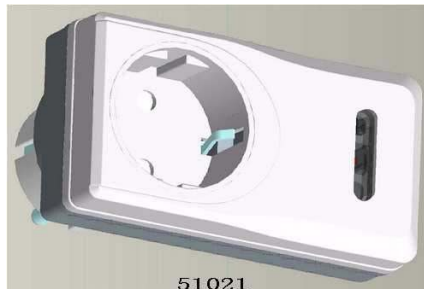
51015X36



51019



51020



51021



51024



51025



51026



51027

***** To be continued *****

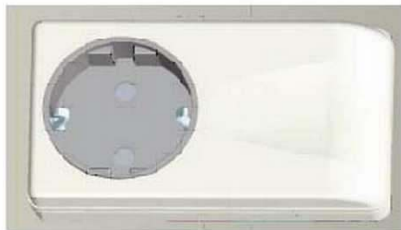
TEST REPORT

Reference No. : TRHZ1405755

Date : May. 30, 2014

Page No. : 55 of 106

The photos were submitted by the client, only for reference.



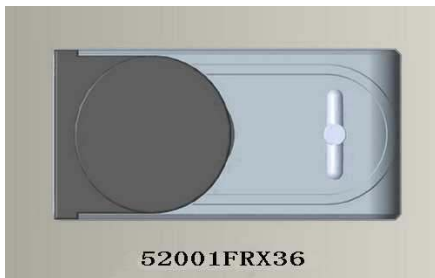
51031



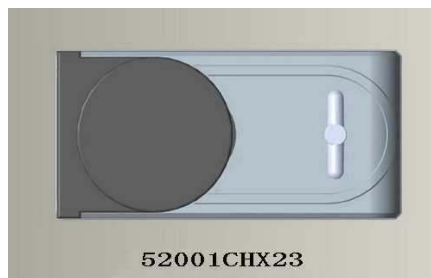
51029



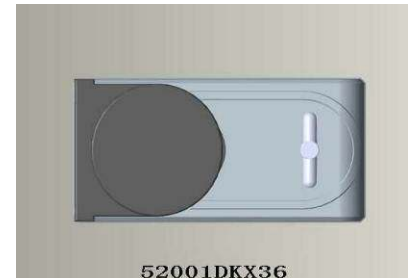
51030



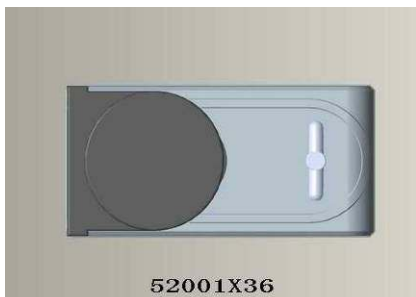
52001FRX36



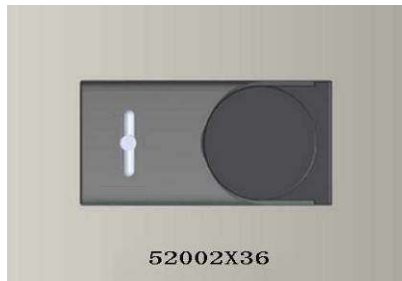
52001CHX23



52001DKX36



52001X36



52002X36



52002CHX23



52002DKX36



52002FRX36



53001FRX10

***** To be continued *****

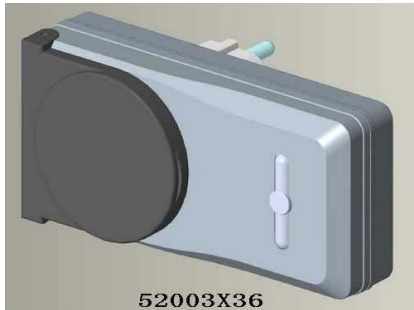
TEST REPORT

Reference No. : TRHZ1405755

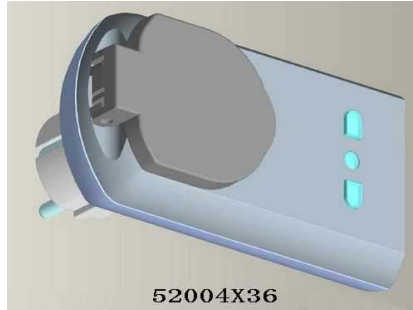
Date : May. 30, 2014

Page No. : 56 of 106

The photos were submitted by the client, only for reference.



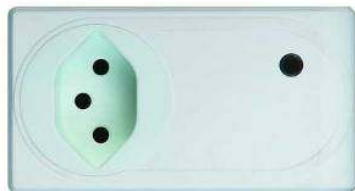
52003X36



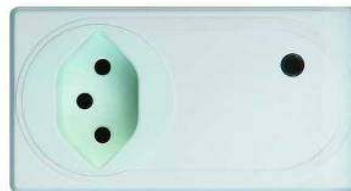
52004X36



52005X36



53001CHX2



53001CHX10



53010FRX36



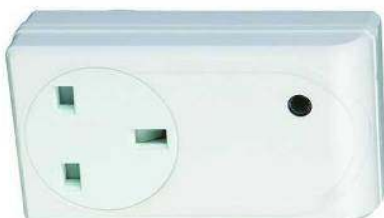
53001DKX2



53001DKX10



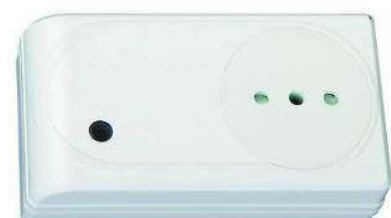
53010X36



53001GBX10



53003DKX10



53001ITX2

***** To be continued *****

TEST REPORT

Reference No. : TRHZ1405755

Date : May. 30, 2014

Page No. : 57 of 106

The photos were submitted by the client, only for reference.



53002DKX2



53001X2



53001X10



53002CHX2



53002CHX10



53007CHX2



53007CHX10



53002X2



53006X10



53003FRX2



53003FRX10



53001GBX2

***** To be continued *****

TEST REPORT

Reference No. : TRHZ1405755

Date : May. 30, 2014

Page No. : 58 of 106

The photos were submitted by the client, only for reference.



53003GBX10



53003ITX2



53007X2



53007ITX2



53007GBX10



53007GBX2



53007X10



53007DKX2



53007DKX10



55605X10



55605X36



55606CHX10

***** To be continued *****

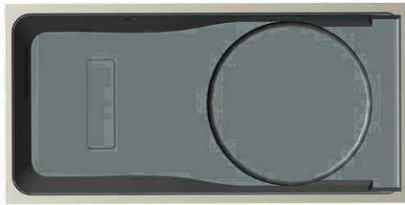
TEST REPORT

Reference No. : TRHZ1405755

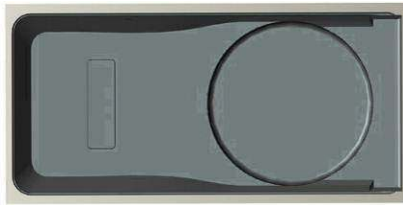
Date : May. 30, 2014

Page No. : 59 of 106

The photos were submitted by the client, only for reference.



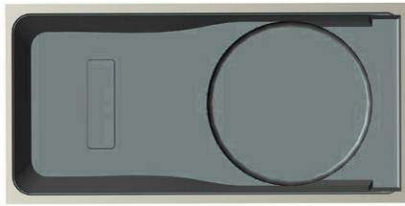
55606CHX23



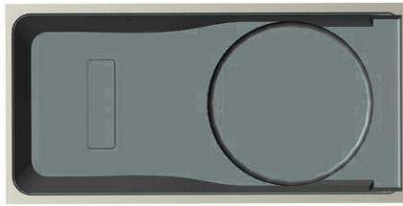
55606DKX10



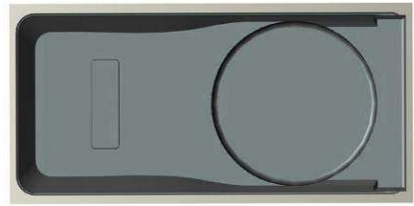
55606DKX36



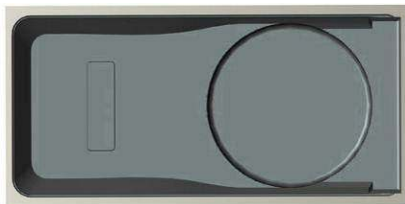
55606FRX10



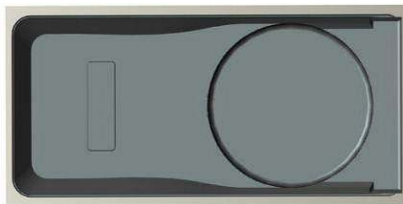
55606FRX36



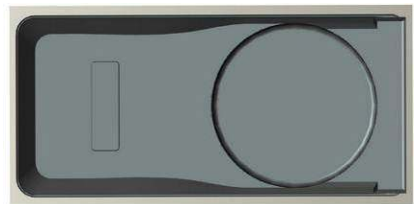
55606GBX10



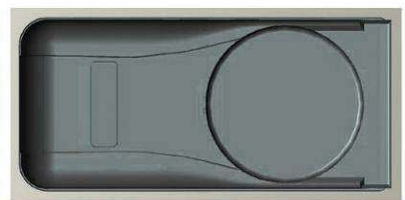
55606GBX30



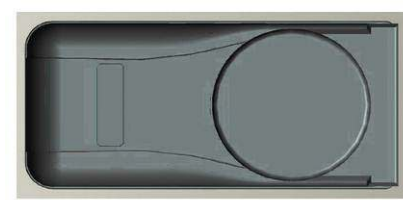
55606X10



55606X36



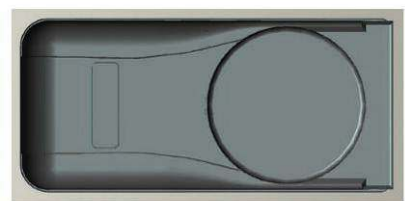
55607CHX10



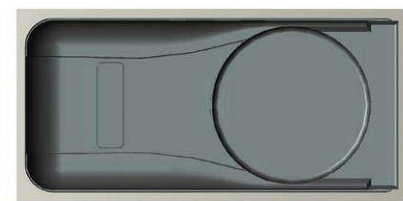
55607CHX23



55607DKX10



55607GBX10



55607GBX30



55607FRX36

***** To be continued *****

TEST REPORT

Reference No. : TRHZ1405755

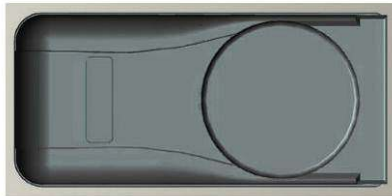
Date : May. 30, 2014

Page No. : 60 of 106

The photos were submitted by the client, only for reference.



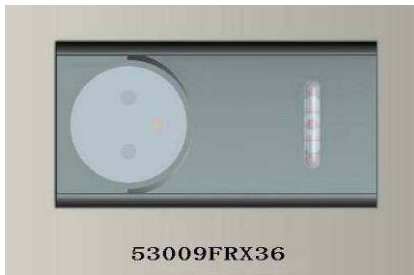
55607DKX36



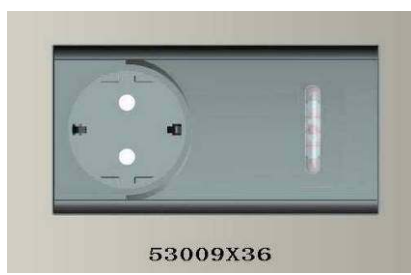
55607FRX10



57002



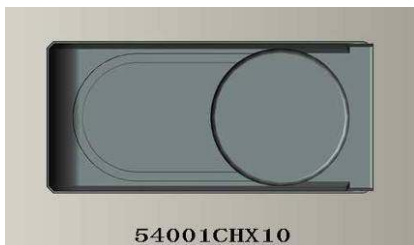
53009FRX36



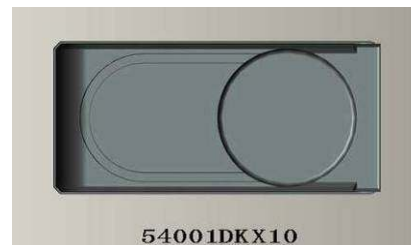
53009X36



53011FRX36



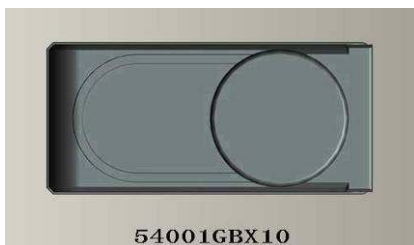
54001CHX10



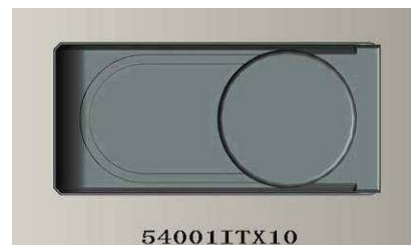
54001DKX10



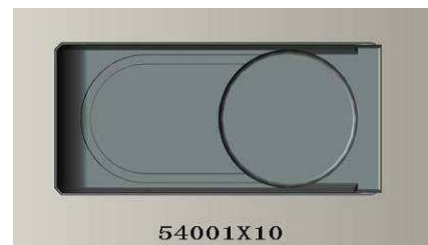
54001FRX10



54001GBX10



54001ITX10



54001X10

***** To be continued *****

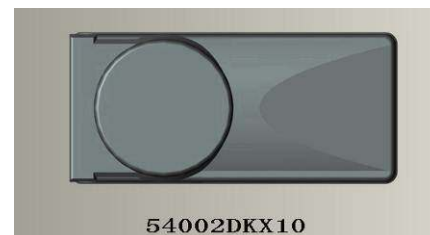
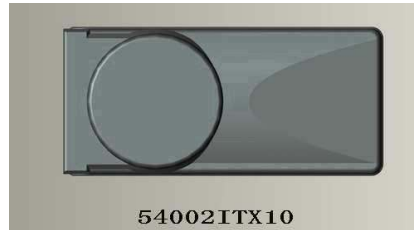
TEST REPORT

Reference No. : TRHZ1405755

Date : May. 30, 2014

Page No. : 61 of 106

The photos were submitted by the client, only for reference.



***** To be continued *****

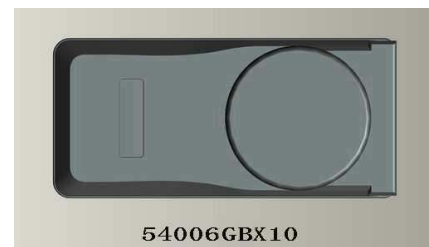
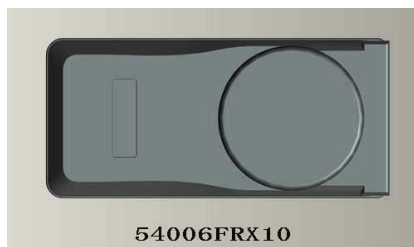
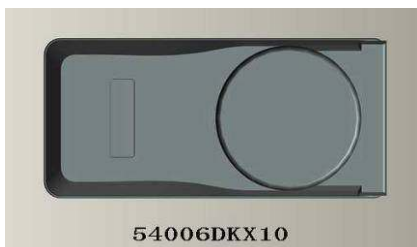
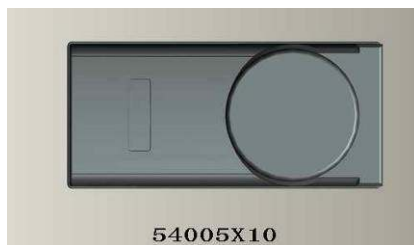
TEST REPORT

Reference No. : TRHZ1405755

Date : May. 30, 2014

Page No. : 62 of 106

The photos were submitted by the client, only for reference.



***** To be continued *****

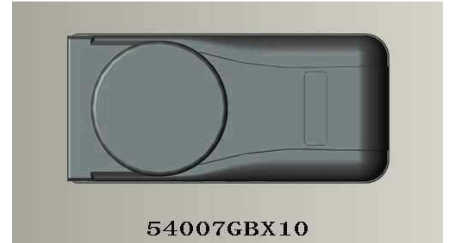
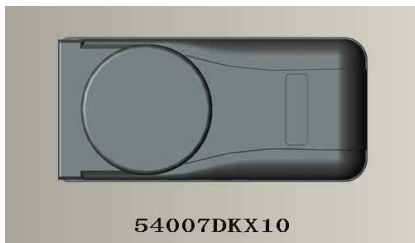
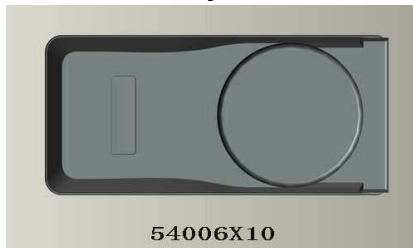
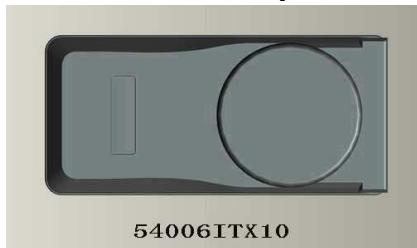
TEST REPORT

Reference No. : TRHZ1405755

Date : May. 30, 2014

Page No. : 63 of 106

The photos were submitted by the client, only for reference.



***** To be continued *****

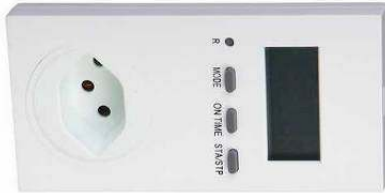
TEST REPORT

Reference No. : TRHZ1405755

Date : May. 30, 2014

Page No. : 64 of 106

The photos were submitted by the client, only for reference.



56004CH



56004DK



56004FR



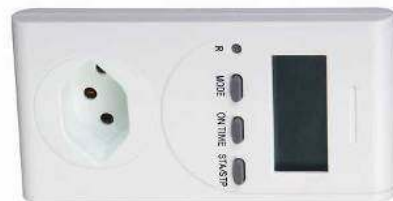
56004GB



56004IT



56005



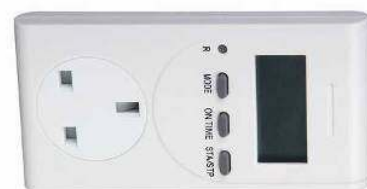
56005CH



56005DK



56005FR



56005GB



56005IT



56006



56006CH



56006DK



56006FR

***** To be continued *****

TEST REPORT

Reference No. : TRHZ1405755

Date : May. 30, 2014

Page No. : 65 of 106

The photos were submitted by the client, only for reference.



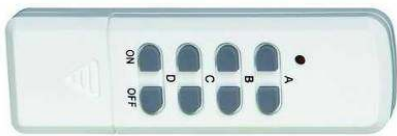
56006GB



56006IT



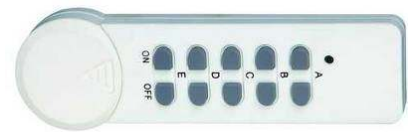
50001



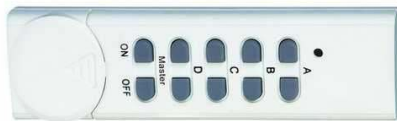
26AY



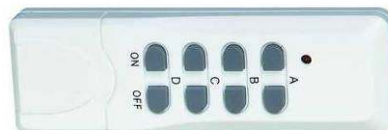
26MAY



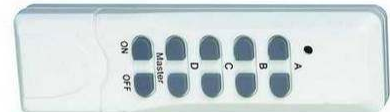
26MCY



26MDY



26MY



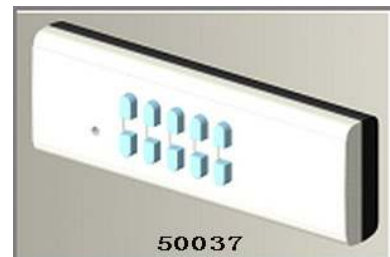
26MY5



26QY



26QY5



50037

***** To be continued *****

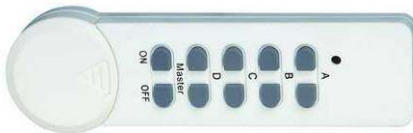
TEST REPORT

Reference No. : TRHZ1405755

Date : May. 30, 2014

Page No. : 66 of 106

The photos were submitted by the client, only for reference.



50002



50003



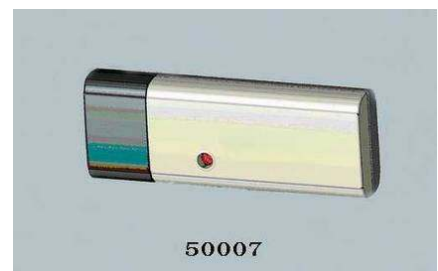
50004



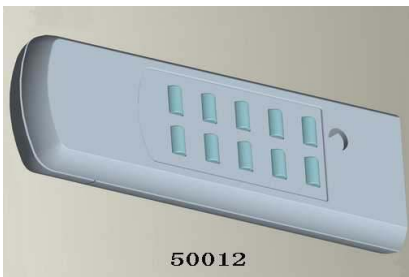
50005



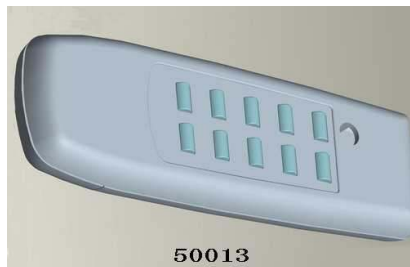
50006



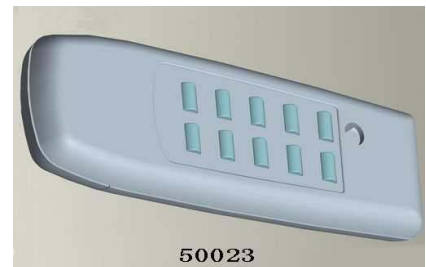
50007



50012



50013



50023



2603FR-200



53003GBX2



53005ITX2



53005GBX10



53006GBX2



53005GBX2

TÜV NORD (Hangzhou) CO.,LTD.

Member of TÜV NORD Group

This Test Report is issued by the Company Subject to its General Conditions of Service printed overleaf or available on request. Attention is drawn to the limitations of liability, indemnification and jurisdictional policies defined therein. The results shown in this Test report refer only to the sample(s) tested unless otherwise stated. This test report shall not be reproduced, except in full, without written approval of the Company. 本报告按本公司所制定之通用服务条款所编制发放。请注意本报告首页背面之此条款，本公司之义务、免责、管辖权均有明确规定，该条款也可向本公司索取。除非另有说明，本报告仅对来样负责。未经许可，不得部分复制本报告。

5 Floor, No. 50 Jiuquan Road, Jianggan District, Hangzhou, China, 310019
web: www.tuv-nord.com/cn tel: +86(0)571 85386989 ext 212

中国·杭州市江干区九环路50号5楼(杭州市质量技术监督检测院) 邮编: 310019
fax: +86(0)571 85386986 e-mail/报告查询: GPSC@tuv-nord.com

TEST REPORT

Reference No. : TRHZ1405755

Date : May. 30, 2014

Page No. : 67 of 106

The photos were submitted by the client, only for reference.



53002GBX10



53006CHX2



2607



2607-200



2607-3600



2607CH-200



2607CH-1000



2607DK-200



53006X2



53006FRX10



53006FRX2



53006GBX10



53002FRX2



53002FRX10



53002GBX2

TEST REPORT

Reference No. : TRHZ1405755

Date : May. 30, 2014

Page No. : 68 of 106

The photos were submitted by the client, only for reference.



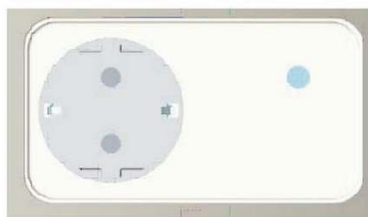
53005X2



53005X10



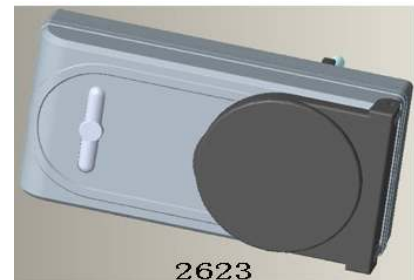
53002ITX2



51028



53001X36



2623



53003CHX2



53006CHX10



53007FRX10



53006DKX2



53006DKX10



53007FRX2



2606FR-200



2606FR-3600



53011X36

TÜV NORD (Hangzhou) CO.,LTD.

Member of TÜV NORD Group

This Test Report is issued by the Company Subject to its General Conditions of Service printed overleaf or available on request. Attention is drawn to the limitations of liability, indemnification and jurisdictional policies defined therein. The results shown in this Test report refer only to the sample(s) tested unless otherwise stated. This test report shall not be reproduced, except in full, without written approval of the Company. 本报告按本公司所制定之通用服务条款所编制发放。请注意本报告首页背面之此条款，本公司之义务、免责、管辖权均有明确规定，该条款也可向本公司索取。除非另有说明，本报告仅对来样负责。未经许可，不得部分复制本报告。

5 Floor, No.50 Jiuquan Road, Jianggan District, Hangzhou, China, 310019 中国·杭州市江干区九环路50号5楼(杭州市质量技术监督检测院) 邮编: 310019
 web: www.tuv-nord.com/cn tel: +86(0)571 85386989 ext 212 fax: +86(0)571 85386986 e-mail/报告查询: GPSC@tuv-nord.com

TEST REPORT

Reference No. : TRHZ1405755

Date : May. 30, 2014

Page No. : 69 of 106

The photos were submitted by the client, only for reference.



53005FRX2



53005FRX10



53006ITX2



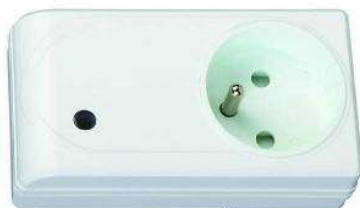
53003DKX2



53002X10



53003CHX10



2601FR-3600



2601IT-1000



2602-200



2602



2602CH-200



2602CH-1000



2602DK-200



2602DK-1000



2602FR-200

TÜV NORD (Hangzhou) CO.,LTD.

Member of TÜV NORD Group

This Test Report is issued by the Company Subject to its General Conditions of Service printed overleaf or available on request. Attention is drawn to the limitations of liability, indemnification and jurisdictional policies defined therein. The results shown in this Test report refer only to the sample(s) tested unless otherwise stated. This test report shall not be reproduced, except in full, without written approval of the Company. 本报告按本公司所制定之通用服务条款所编制发放。请注意本报告首页背面之此条款，本公司之义务、免责、管辖权均有明确规定，该条款也可向本公司索取。除非另有说明，本报告仅对来样负责。未经许可，不得部分复制本报告。

5 Floor, No.50 Jiuquan Road, Jianggan District, Hangzhou, China, 310019
web: www.tuv-nord.com/cn tel: +86(0)571 85386989 ext 212

中国·杭州市江干区九环路50号5楼(杭州市质量技术监督检测院) 邮编: 310019
fax: +86(0)571 85386986 e-mail/报告查询: GPSC@tuv-nord.com

TEST REPORT

Reference No. : TRHZ1405755

Date : May. 30, 2014

Page No. : 70 of 106

The photos were submitted by the client, only for reference.



2603DK-1000



53008FRX36



53002DKX10



53003X10



53005CHX2



53005CHX10



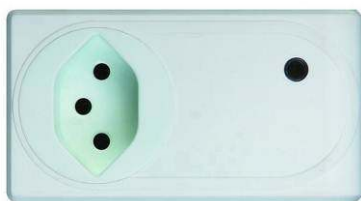
53008X36



53005DKX2



53005DKX10



55001CHX2



55001CHX10



55001CHX23



55001DKX2



55001DKX10



55001DKX36

TÜV NORD (Hangzhou) CO.,LTD.

Member of TÜV NORD Group

This Test Report is issued by the Company Subject to its General Conditions of Service printed overleaf or available on request. Attention is drawn to the limitations of liability, indemnification and jurisdictional policies defined therein. The results shown in this Test report refer only to the sample(s) tested unless otherwise stated. This test report shall not be reproduced, except in full, without written approval of the Company. 本报告按本公司所制定之通用服务条款所编制发放。请注意本报告首页背面之此条款，本公司之义务、免责、管辖权均有明确规定，该条款也可向本公司索取。除非另有说明，本报告仅对来样负责。未经许可，不得部分复制本报告。

5 Floor, No. 50 Jiuquan Road, Jiangnan District, Hangzhou, China, 310019 中国·杭州市江干区九环路50号5楼(杭州市质量技术监督检测院) 邮编: 310019
 web: www.tuv-nord.com/cn tel: +86(0)571 85386989 ext 212 fax: +86(0)571 85386986 e-mail/报告查询: GPSC@tuv-nord.com

TEST REPORT

Reference No. : TRHZ1405755

Date : May. 30, 2014

Page No. : 71 of 106

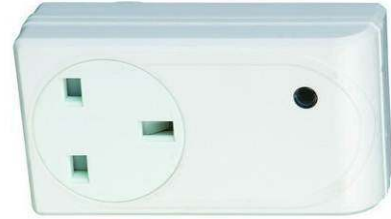
The photos were submitted by the client, only for reference.



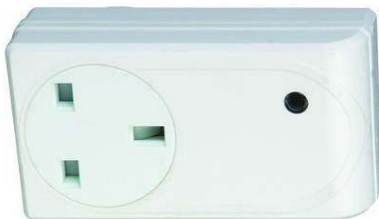
55001FRX2



55001FRX10



55001GBX2



55001GBX30



55001GBX10



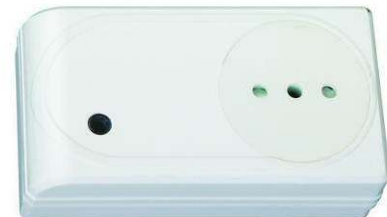
55001ITX2



55001X10



55001X2



55001ITX36



55001X36



55002DKX36



55002CHX23

***** To be continued *****

TEST REPORT

Reference No. : TRHZ1405755

Date : May. 30, 2014

Page No. : 72 of 106

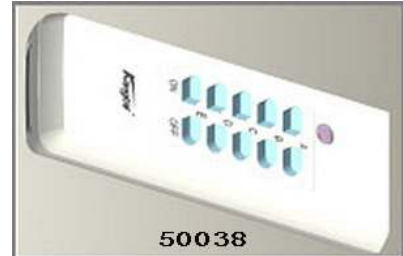
The photos were submitted by the client, only for reference.



55002CHX 2



55002CHX10



50038



55002DKX10



55002DKX2



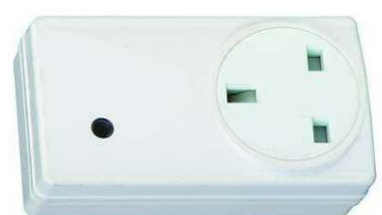
55002FRX10



55002FRX2



55002GBX10



55002GBX2



55002ITX2



55002GBX30



55002X2

***** To be continued *****

TEST REPORT

Reference No. : TRHZ1405755

Date : May. 30, 2014

Page No. : 73 of 106

The photos were submitted by the client, only for reference.



55002ITX36



55003CHX2



55002X10



55003CHX10



55003DKX2



55003CHX23



55003DKX36



55003DKX10



55003FRX2



55003GBX2



55003FRX10



55003GBX30



55003GBX10



55003ITX36



55003ITX2

TÜV NORD (Hangzhou) CO.,LTD.

Member of TÜV NORD Group

This Test Report is issued by the Company Subject to its General Conditions of Service printed overleaf or available on request. Attention is drawn to the limitations of liability, indemnification and jurisdictional policies defined therein. The results shown in this Test report refer only to the sample(s) tested unless otherwise stated. This test report shall not be reproduced, except in full, without written approval of the Company. 本报告按本公司所制定之通用服务条款所编制发放。请注意本报告首页背面之此条款，本公司之义务、免责、管辖权均有明确规定，该条款也可向本公司索取。除非另有说明，本报告仅对来样负责。未经许可，不得部分复制本报告。

5 Floor, No. 50 Jiuquan Road, Jiangnan District, Hangzhou, China, 310019
web: www.tuv-nord.com/cn tel: +86(0)571 85386989 ext 212

中国·杭州市江干区九环路50号5楼(杭州市质量技术监督检测院) 邮编: 310019
fax: +86(0)571 85386986 e-mail/报告查询: GPSC@tuv-nord.com

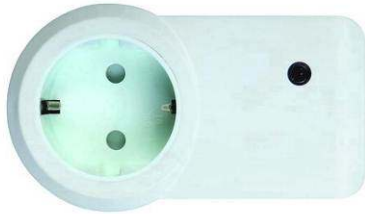
TEST REPORT

Reference No. : TRHZ1405755

Date : May. 30, 2014

Page No. : 74 of 106

The photos were submitted by the client, only for reference.



55003X10



55003X2



55005CHX10



55005CHX2



55005DKX2



55005CHX23



55005DKX36



55005DKX10



55005FRX10



55005FRX2



55005GBX10



55005GBX2



55005ITX2



55005GBX30



55005X2

TÜV NORD (Hangzhou) CO.,LTD.

Member of TÜV NORD Group

This Test Report is issued by the Company Subject to its General Conditions of Service printed overleaf or available on request. Attention is drawn to the limitations of liability, indemnification and jurisdictional policies defined therein. The results shown in this Test report refer only to the sample(s) tested unless otherwise stated. This test report shall not be reproduced, except in full, without written approval of the Company. 本报告按本公司所制定之通用服务条款所编制发放。请注意本报告首页背面之此条款，本公司之义务、免责、管辖权均有明确规定，该条款也可向本公司索取。除非另有说明，本报告仅对来样负责。未经许可，不得部分复制本报告。

TEST REPORT

Reference No. : TRHZ1405755

Date : May. 30, 2014

Page No. : 75 of 106

The photos were submitted by the client, only for reference.



55005ITX36



55006CHX2



55005X10



55006CHX23



55006CHX10



55006DKX10



55006DKX2



55006FRX2



55006DKX36



55006GBX2



55006FRX10



55006GBX30



55006GBX10



55006ITX36



55006ITX2

TEST REPORT

Reference No. : TRHZ1405755

Date : May. 30, 2014

Page No. : 76 of 106

The photos were submitted by the client, only for reference.



55006X10



55006X2



55007CHX2



55006X36



55007CHX23



55007CHX10



55007DKX10



55007DKX2



55007DKX36



55007FRX10



55007FRX2



55007GBX2



55007GBX30



55007GBX10



55007ITX2

TEST REPORT

Reference No. : TRHZ1405755

Date : May. 30, 2014

Page No. : 77 of 106

The photos were submitted by the client, only for reference.



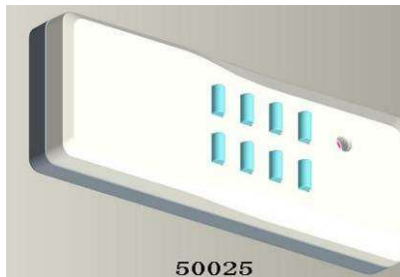
55007ITX36



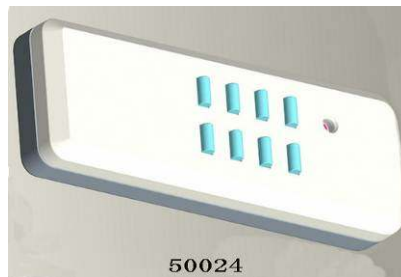
55007X2



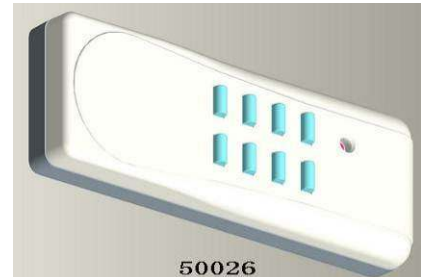
55007X10



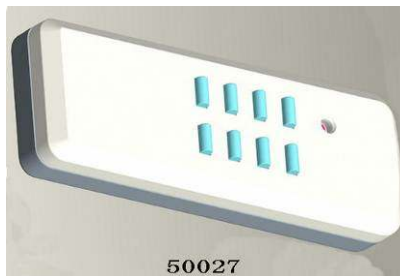
50025



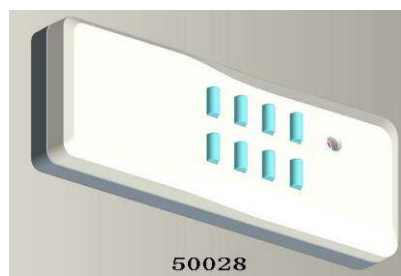
50024



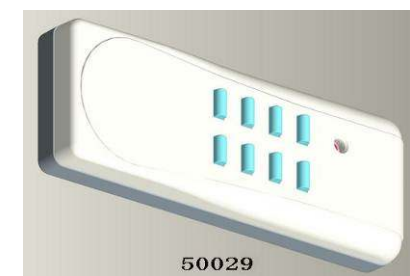
50026



50027



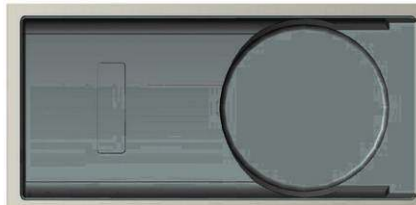
50028



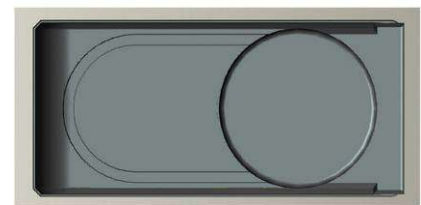
50029



70003



55605DKX10



55601CHX23

***** To be continued *****

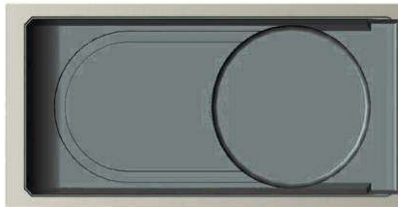
TEST REPORT

Reference No. : TRHZ1405755

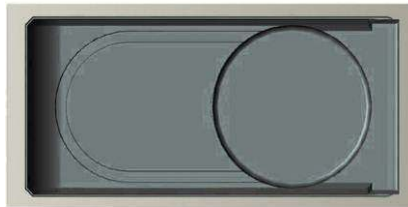
Date : May. 30, 2014

Page No. : 78 of 106

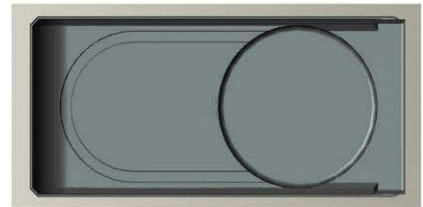
The photos were submitted by the client, only for reference.



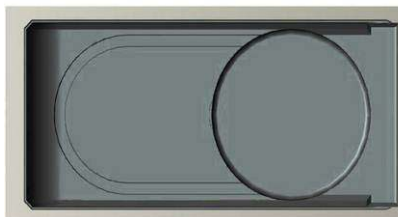
55601DKX36



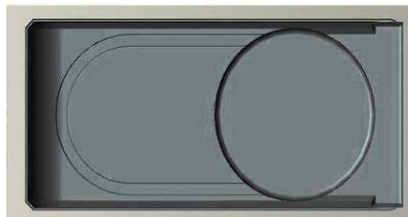
55601DKX10



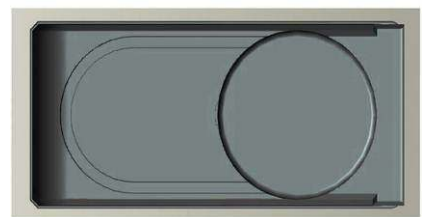
55601CHX10



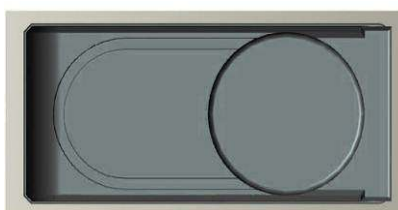
55601FRX10



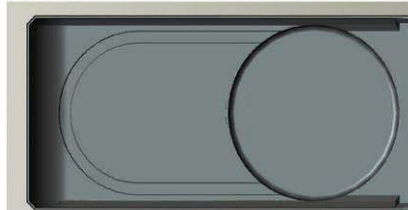
55601FRX36



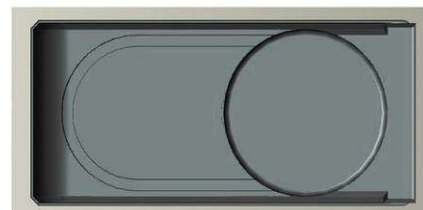
55601GBX10



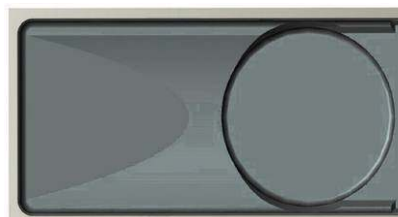
55601GBX30



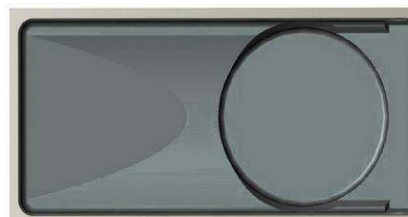
55601X10



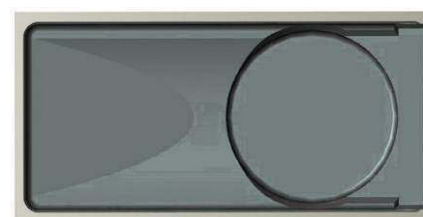
55601X36



55602CHX23



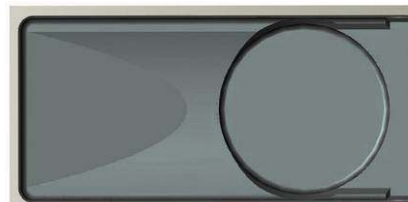
55602CHX10



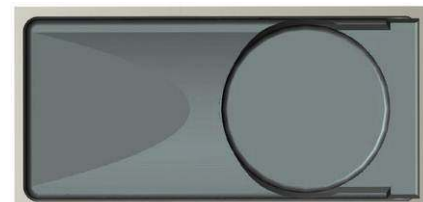
55602DKX10



55602DKX36



55602GBX30



55602GBX10

***** To be continued *****

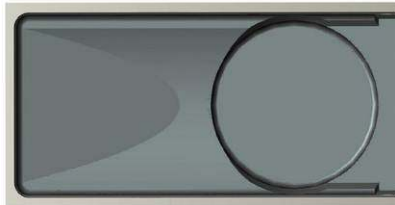
TEST REPORT

Reference No. : TRHZ1405755

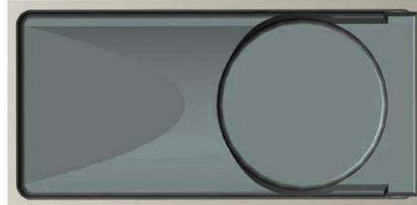
Date : May. 30, 2014

Page No. : 79 of 106

The photos were submitted by the client, only for reference.



55602X10



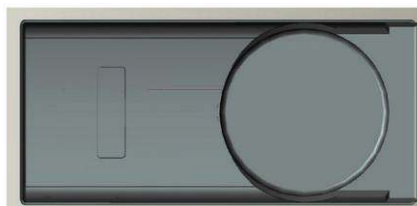
55602FRX10



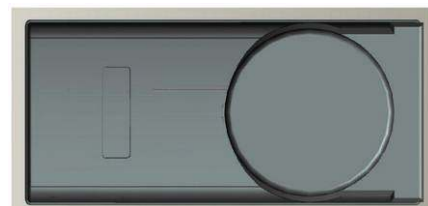
55602FRX36



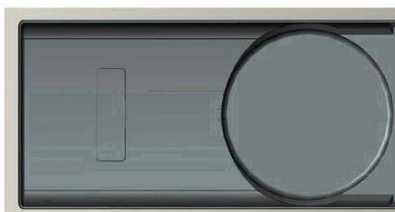
55602X36



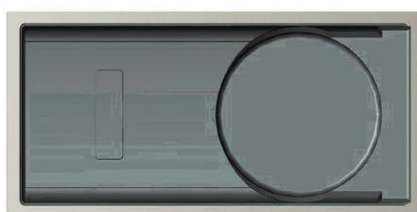
55605CHX10



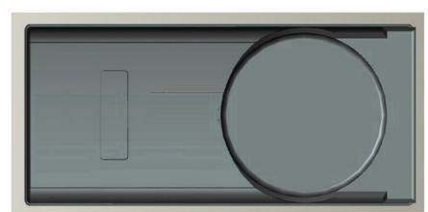
55605CHX23



55605FRX10



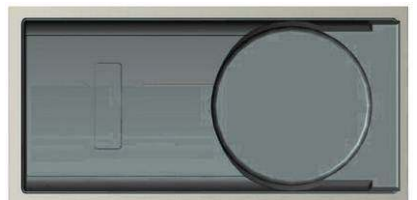
55605DKX36



55605GBX10



55605GBX30



55605FRX36



55607X36

***** To be continued *****

TEST REPORT

Reference No. : TRHZ1405755

Date : May. 30, 2014

Page No. : 80 of 106

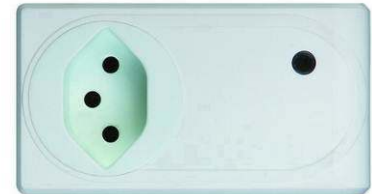
The photos were submitted by the client, only for reference.



58001X10



58001X36



58001CHX2



58001DKX2



58001CHX23



58001CHX10



58001DKX36



58001DKX10



58001GBX30



58001GBX10



58001GBX2



58001FRX36



58001FRX2



58001FRX10



58002DKX36

***** To be continued *****

TEST REPORT

Reference No. : TRHZ1405755

Date : May. 30, 2014

Page No. : 81 of 106

The photos were submitted by the client, only for reference.



58002CHX23



58002DKX10



58002DKX2



58002CHX10



58002CHX2



58002GBX30



58002GBX10



58002GBX2



58002FRX36



58002FRX10



58002FRX2



58002X36



58002X10



58002X2



58003DKX36

***** To be continued *****

TÜV NORD (Hangzhou) CO.,LTD.

Member of TÜV NORD Group

This Test Report is issued by the Company Subject to its General Conditions of Service printed overleaf or available on request. Attention is drawn to the limitations of liability, indemnification and jurisdictional policies defined therein. The results shown in this Test report refer only to the sample(s) tested unless otherwise stated. This test report shall not be reproduced, except in full, without written approval of the Company. 本报告按本公司所制定之通用服务条款所编制发放。请注意本报告首页背面之此条款，本公司之义务、免责、管辖权均有明确规定，该条款也可向本公司索取。除非另有说明，本报告仅对来样负责。未经许可，不得部分复制本报告。

5 Floor, No. 50 Jiuquan Road, Jianggan District, Hangzhou, China, 310019
web: www.tuv-nord.com/cn tel: +86(0)571 85386989 ext 212

中国·杭州市江干区九环路50号5楼(杭州市质量技术监督检测院) 邮编: 310019
fax: +86(0)571 85386986 e-mail/报告查询: GPSC@tuv-nord.com

TEST REPORT

Reference No. : TRHZ1405755

Date : May. 30, 2014

Page No. : 82 of 106

The photos were submitted by the client, only for reference.



58003DKX2



58003DKX10



58003CHX23



58003CHX2



58003CHX10



58003GBX30



58003GBX2



58003GBX10



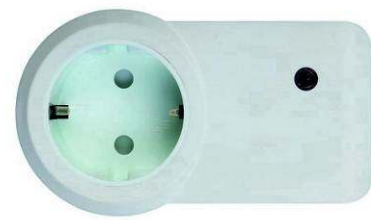
58003FRX36



58003FRX2



58003FRX10



58003X36

***** To be continued *****

TEST REPORT

Reference No. : TRHZ1405755

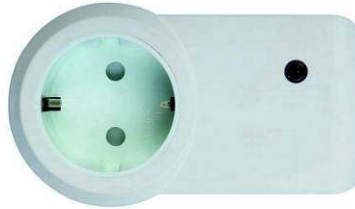
Date : May. 30, 2014

Page No. : 83 of 106

The photos were submitted by the client, only for reference.



58003X2



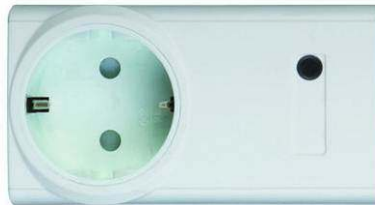
58003X10



58005X2



58005X10



58005X36



58005GBX30



58005GBX10



58005GBX2



58005CHX23



58005FRX2



58005FRX10



58005FRX36

***** To be continued *****

TEST REPORT

Reference No. : TRHZ1405755

Date : May. 30, 2014

Page No. : 84 of 106

The photos were submitted by the client, only for reference.



58005CHX2



58005CHX10



58005DKX2



58005DKX10



58005DKX36



58006DKX36



58006CHX2



58006CHX10



58006CHX23



58006DKX2



58006DKX10



58006GBX30

***** To be continued *****

TEST REPORT

Reference No. : TRHZ1405755

Date : May. 30, 2014

Page No. : 85 of 106

The photos were submitted by the client, only for reference.



58006GBX10



58006GBX2



58006FRX36



58006FRX10



58006FRX2



58006X2



58006X36



58006X10



58007DKX36



58007DKX10



58007DKX2



58007CHX23

***** To be continued *****

TEST REPORT

Reference No. : TRHZ1405755

Date : May. 30, 2014

Page No. : 86 of 106

The photos were submitted by the client, only for reference.



58007CHX2



58007CHX10



58007GBX10



58007GBX30



58007GBX2



58007FRX36



58007FRX10



58007FRX2



58007X10



58007X36



58007X2



58001X2

***** To be continued *****

TEST REPORT

Reference No. : TRHZ1405755

Date : May. 30, 2014

Page No. : 87 of 106

The photos were submitted by the client, only for reference.



53001FRX2



55003FRX36



55002X36



51023X3



51023X36



55006FRX36



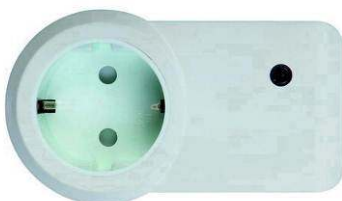
55005X36



55001FRX36



55007X36



55003X36



55005FRX36



55002FRX36

***** To be continued *****

TEST REPORT

Reference No. : TRHZ1405755

Date : May. 30, 2014

Page No. : 88 of 106

The photos were submitted by the client, only for reference.



55007FRX36



55008X2



55008X36



55008X10



55008DKX36



55008DKX10



55008CHX10



55008CHX23



55008DKX2



55008CHX2



55008GBX30



55008GBX10

TEST REPORT

Reference No. : TRHZ1405755

Date : May. 30, 2014

Page No. : 89 of 106



55008GBX2



55008FRX36



55008FRX10



55008FRX2



55009DKX36



55009DKX10



55009DKX2



55009CHX23



55009CHX10



55009CHX2



55009GBX30



55009GBX10

TEST REPORT

Reference No. : TRHZ1405755

Date : May. 30, 2014

Page No. : 90 of 106

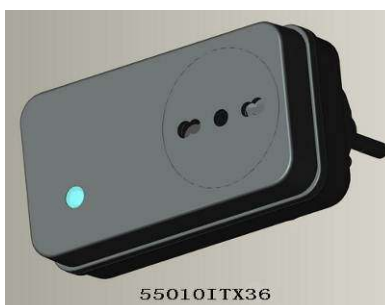
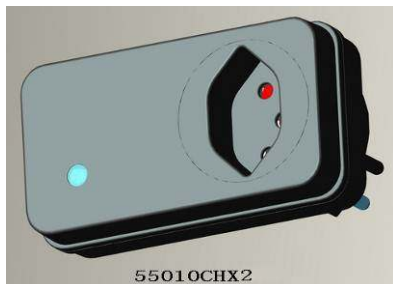
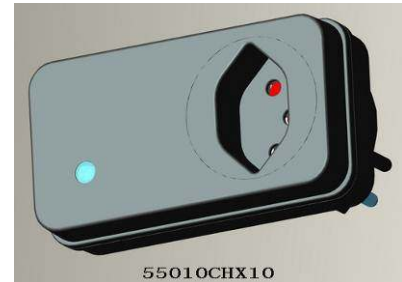
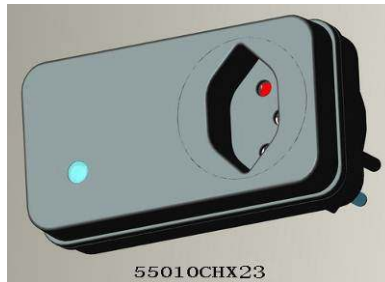


TEST REPORT

Reference No. : TRHZ1405755

Date : May. 30, 2014

Page No. : 91 of 106

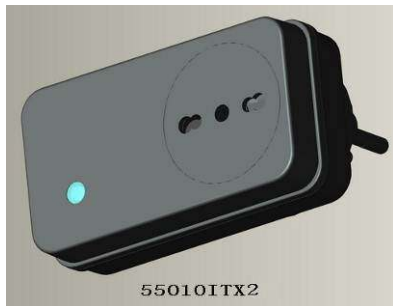


TEST REPORT

Reference No. : TRHZ1405755

Date : May. 30, 2014

Page No. : 92 of 106



***** To be continued *****

TÜV NORD (Hangzhou) CO.,LTD.

Member of TÜV NORD Group

This Test Report is issued by the Company Subject to its General Conditions of Service printed overleaf or available on request. Attention is drawn to the limitations of liability, indemnification and jurisdictional policies defined therein. The results shown in this Test report refer only to the sample(s) tested unless otherwise stated. This test report shall not be reproduced, except in full, without written approval of the Company. 本报告按本公司所制定之通用服务条款所编制发放。请注意本报告首页背面之此条款，本公司之义务、免责、管辖权均有明确规定，该条款也可向本公司索取。除非另有说明，本报告仅对来样负责。未经许可，不得部分复制本报告。

5 Floor, No. 50 Jiujuan Road, Jianggan District, Hangzhou, China, 310019
web: www.tuv-nord.com/cn tel: +86(0)571 85386989 ext 212

中国·杭州市江干区九环路50号5楼(杭州市质量技术监督检测院) 邮编: 310019
fax: +86(0)571 85386986

e-mail/报告查询: GPSC@tuv-nord.com

TEST REPORT

Reference No. : TRHZ1405755

Date : May. 30, 2014

Page No. : 93 of 106

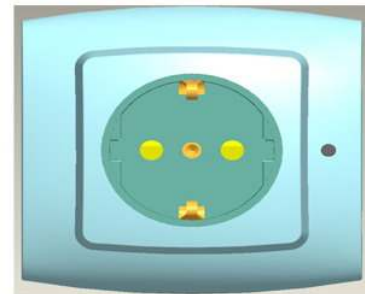
The photos were submitted by the client, only for reference.



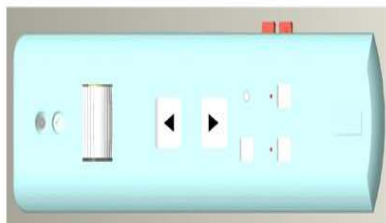
55608FRX2



50011



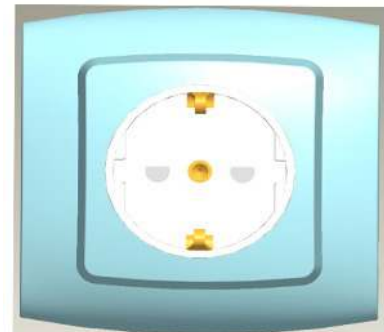
50010



51010



50008



50009



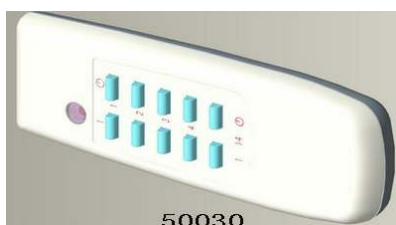
51040



51037



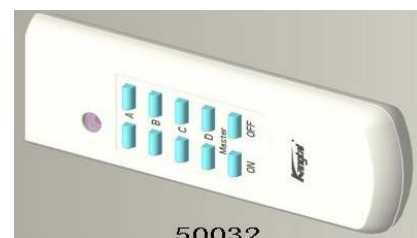
51036



50030



50031



50032

***** To be continued *****

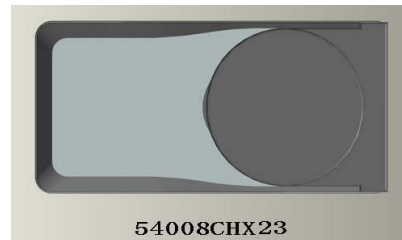
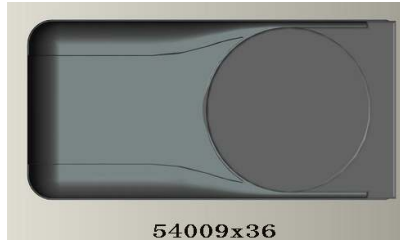
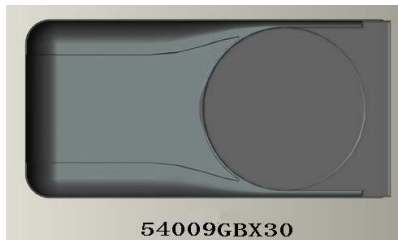
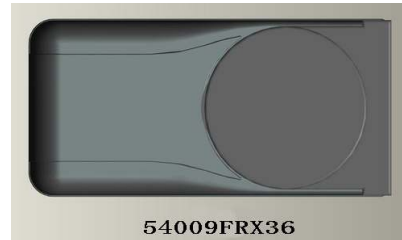
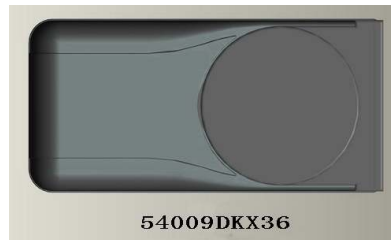
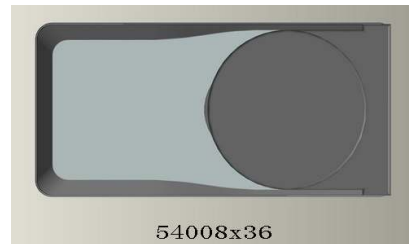
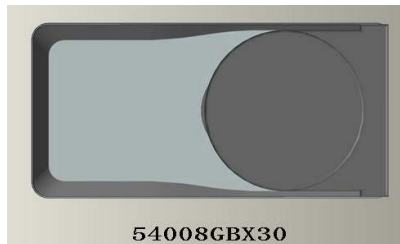
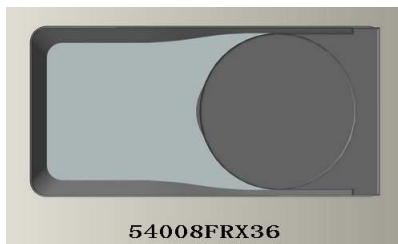
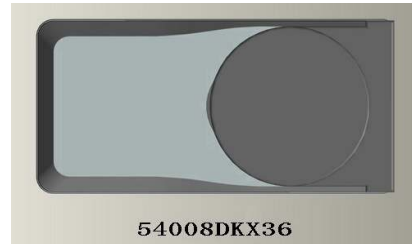
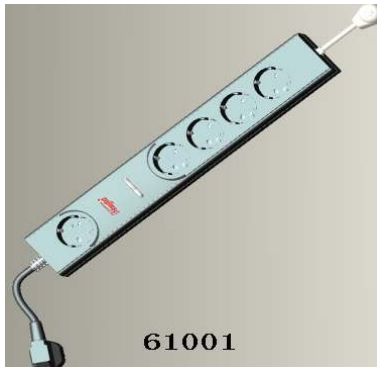
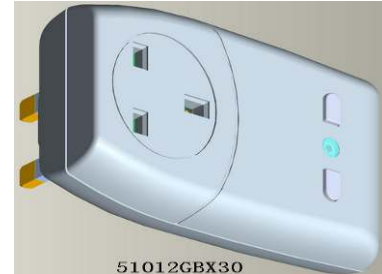
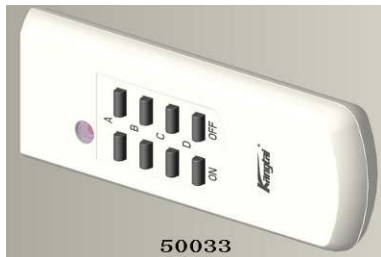
TEST REPORT

Reference No. : TRHZ1405755

Date : May. 30, 2014

Page No. : 94 of 106

The photos were submitted by the client, only for reference.

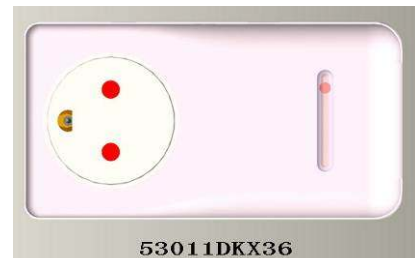
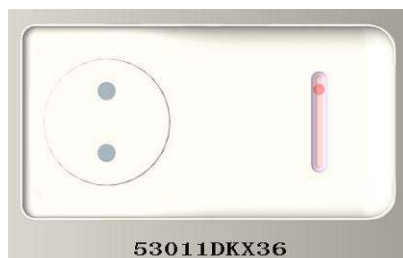
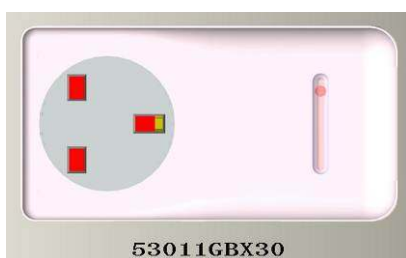
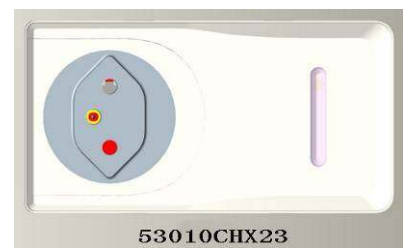
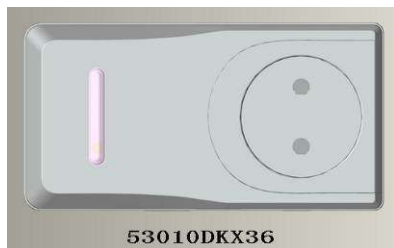
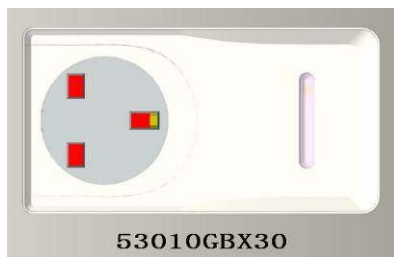
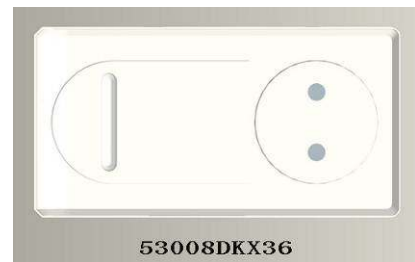
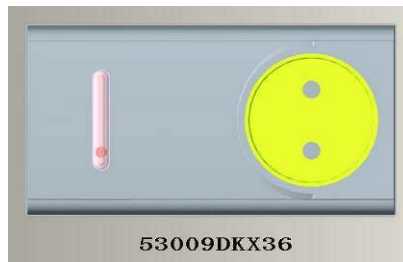
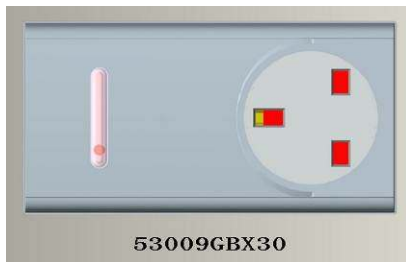
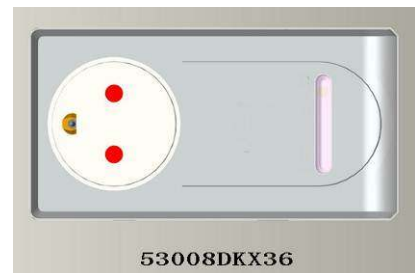
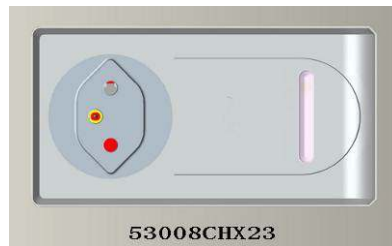
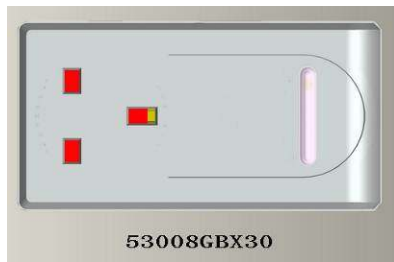


TEST REPORT

Reference No. : TRHZ1405755

Date : May. 30, 2014

Page No. : 95 of 106

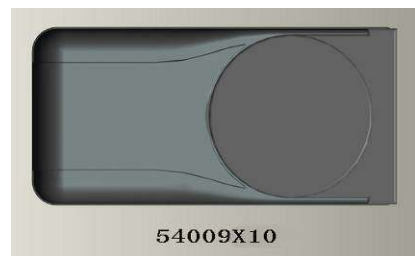
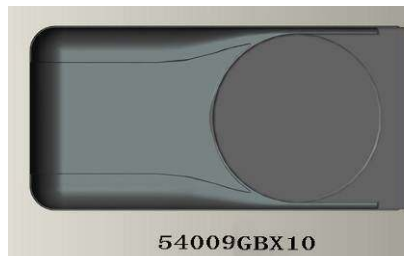
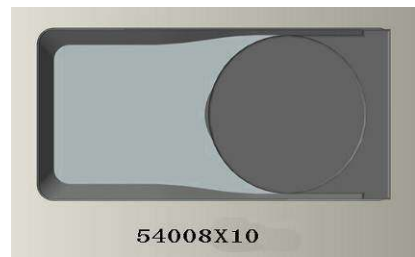
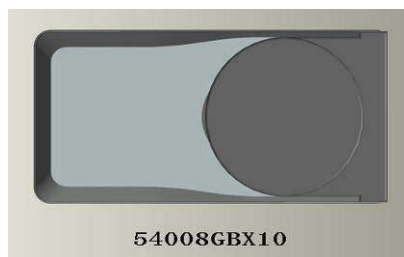
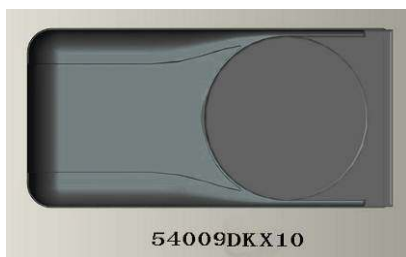
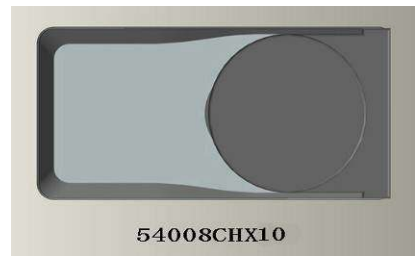
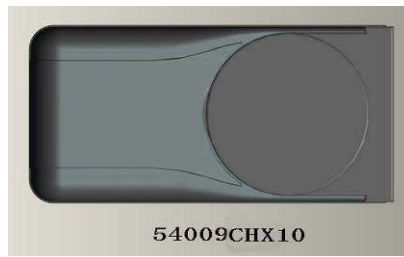
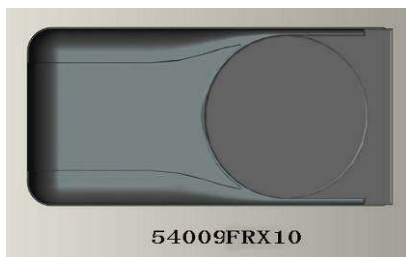
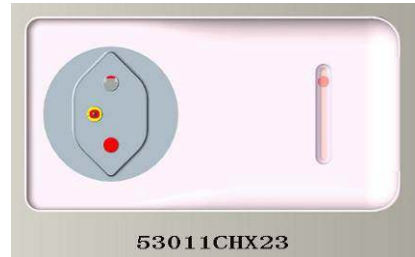
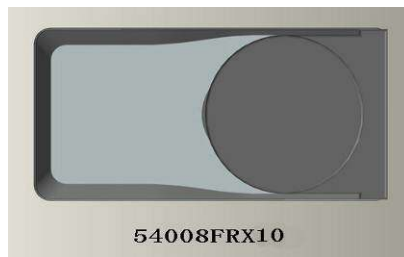
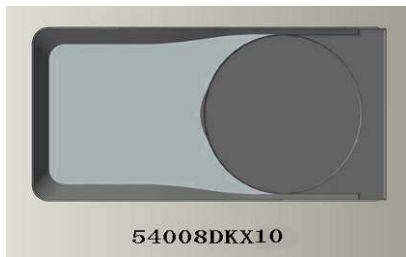


TEST REPORT

Reference No. : TRHZ1405755

Date : May. 30, 2014

Page No. : 96 of 106

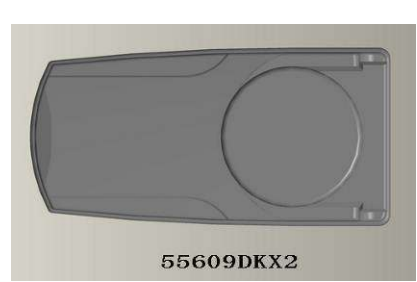


TEST REPORT

Reference No. : TRHZ1405755

Date : May. 30, 2014

Page No. : 97 of 106

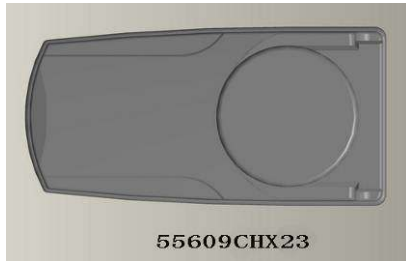


TEST REPORT

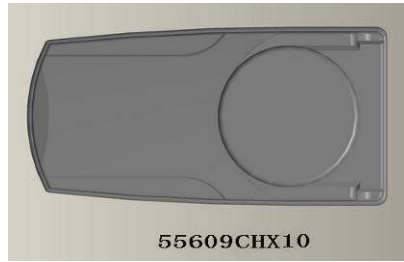
Reference No. : TRHZ1405755

Date : May. 30, 2014

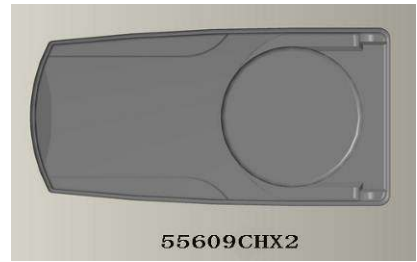
Page No. : 98 of 106



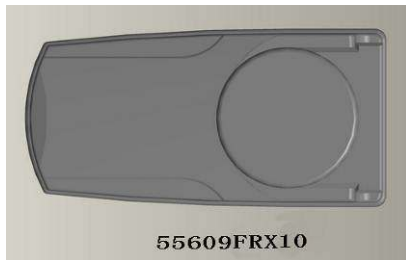
55609CHX23



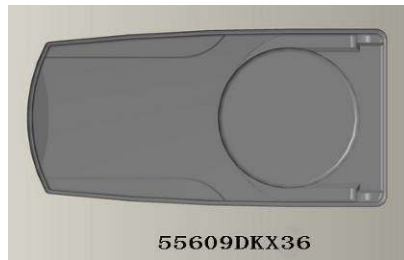
55609CHX10



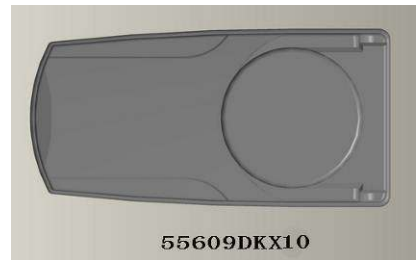
55609CHX2



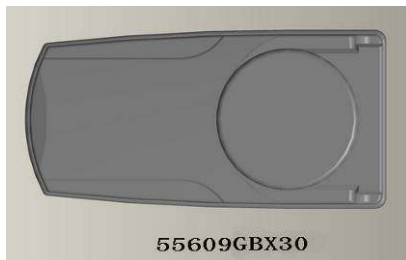
55609FRX10



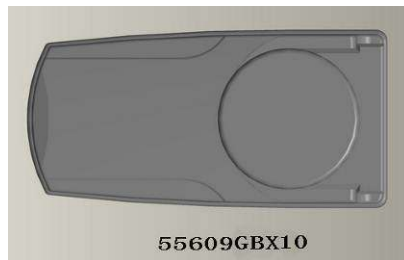
55609DKX36



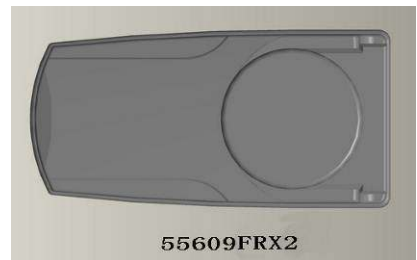
55609DKX10



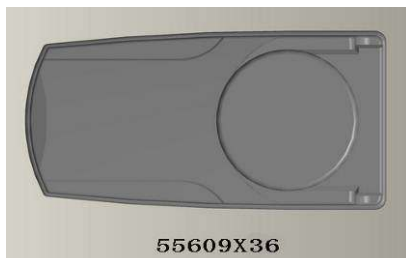
55609GBX30



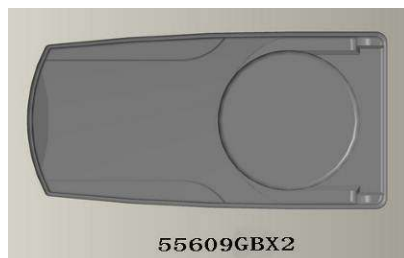
55609GBX10



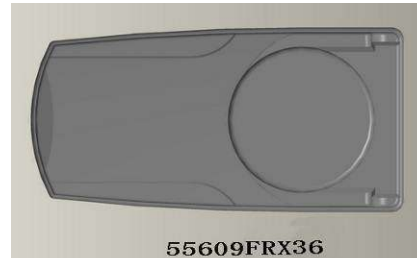
55609FRX2



55609X36



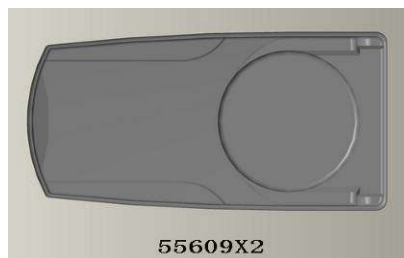
55609GBX2



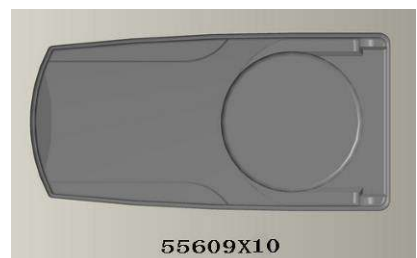
55609FRX36



55610CHX2



55609X2



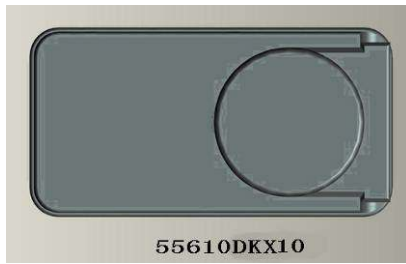
55609X10

TEST REPORT

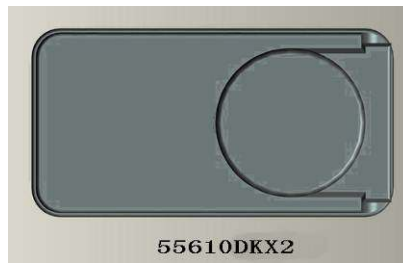
Reference No. : TRHZ1405755

Date : May. 30, 2014

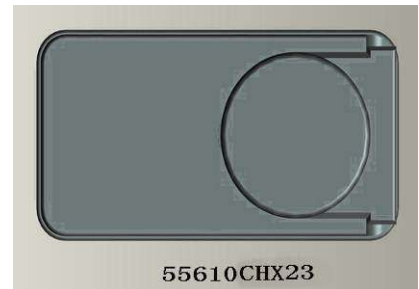
Page No. : 99 of 106



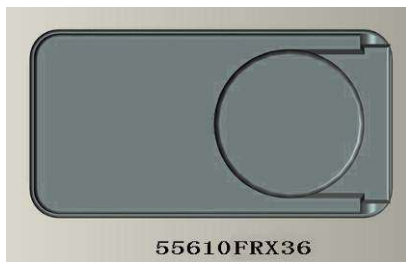
55610DKX10



55610DKX2



55610CHX23



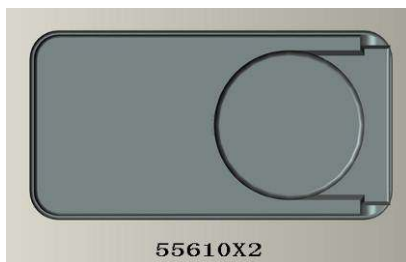
55610FRX36



55610FRX10



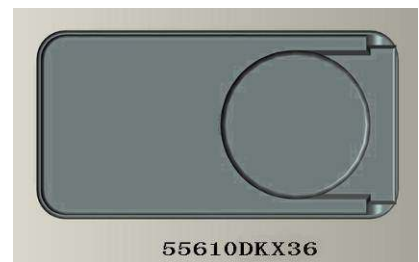
55610CHX10



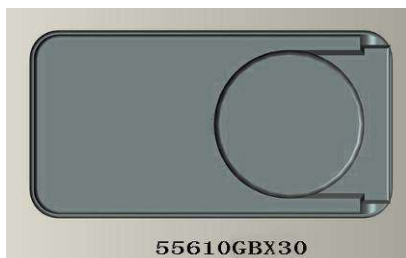
55610X2



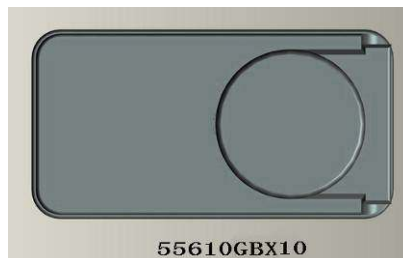
55610FRX2



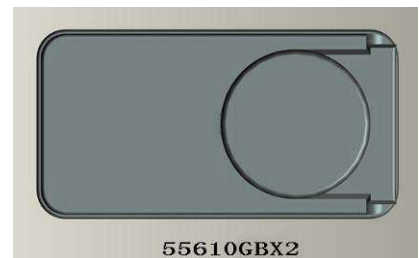
55610DKX36



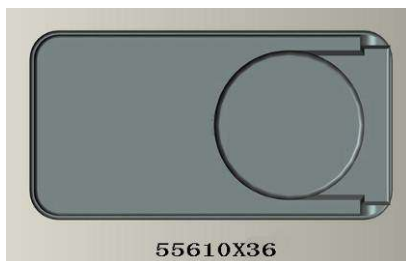
55610GBX30



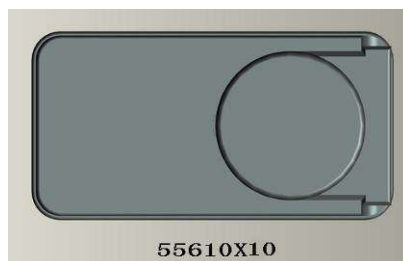
55610GBX10



55610GBX2



55610X36



55610X10



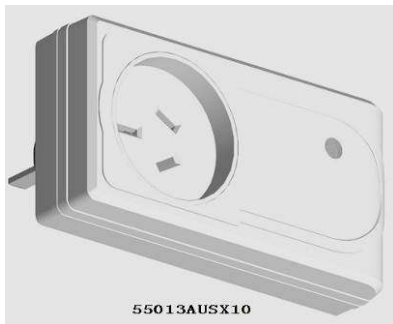
6899F 1620

TEST REPORT

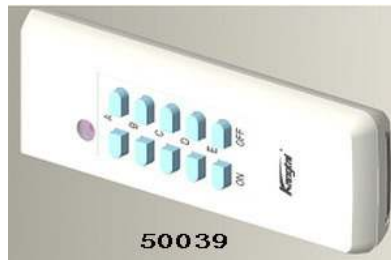
Reference No. : TRHZ1405755

Date : May. 30, 2014

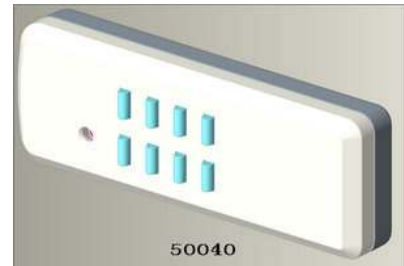
Page No. : 100 of 106



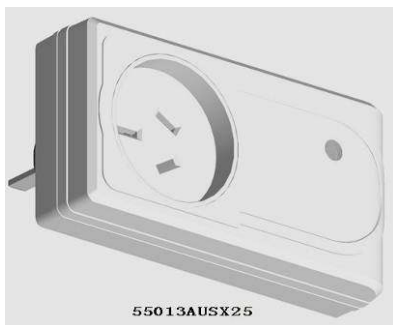
55013AUSX10



50039



50040



55013AUSX25



50041



53005GBX10



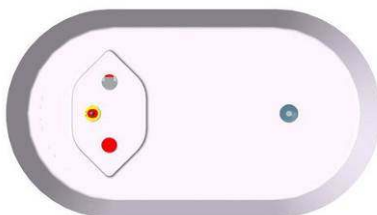
53005GBX2



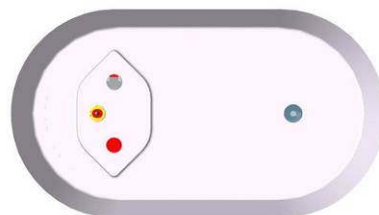
53007GBX10



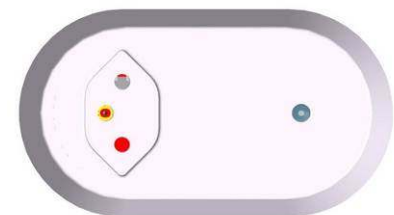
53007GBX2



55012CHX23



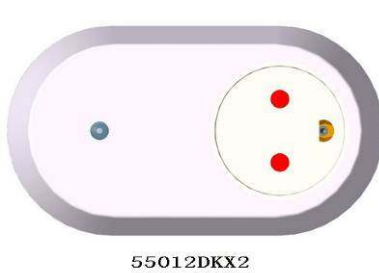
55012CHX10



55012CHX2



55012DKX10



55012DKX2



55012DKX2

TÜV NORD (Hangzhou) CO.,LTD.

Member of TÜV NORD Group

This Test Report is issued by the Company Subject to its General Conditions of Service printed overleaf or available on request. Attention is drawn to the limitations of liability, indemnification and jurisdictional policies defined therein. The results shown in this Test report refer only to the sample(s) tested unless otherwise stated. This test report shall not be reproduced, except in full, without written approval of the Company. 本报告按本公司所制定之通用服务条款所编制发放。请注意本报告首页背面之此条款，本公司之义务、免责、管辖权均有明确规定，该条款也可向本公司索取。除非另有说明，本报告仅对来样负责。未经许可，不得部分复制本报告。

5 Floor, No. 50 Jiuquan Road, Jianggan District, Hangzhou, China, 310019
 web: www.tuv-nord.com/cn tel: +86(0)571 85386989 ext 212

中国·杭州市江干区九环路50号5楼(杭州市质量技术监督检测院) 邮编: 310019
 fax: +86(0)571 85386986 e-mail/报告查询: GPSC@tuv-nord.com

TEST REPORT

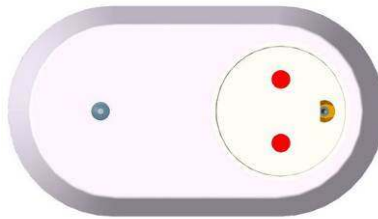
Reference No. : TRHZ1405755

Date : May. 30, 2014

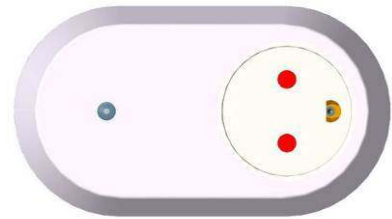
Page No. : 101 of 106



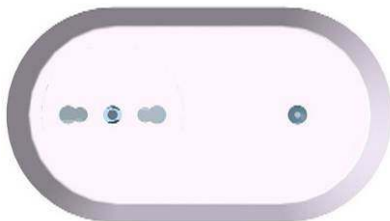
55012DKX36



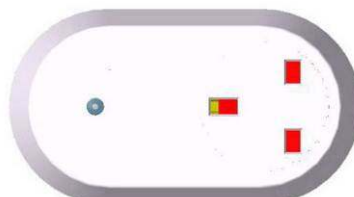
55012DKX10



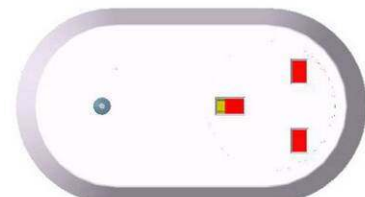
55012DKX36



55012ITX2



55012GBX30



55012GBX10



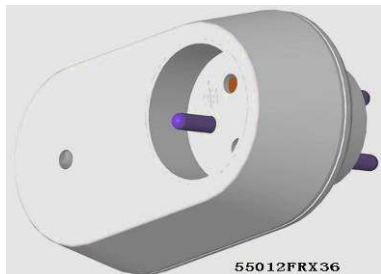
55012GBX2



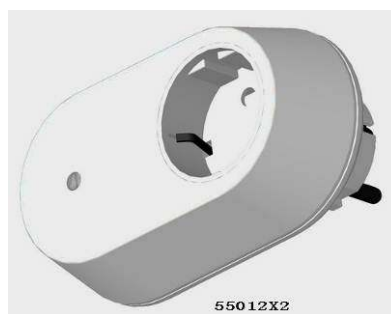
55012FRX2



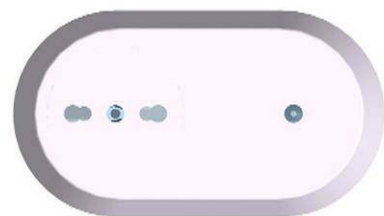
55012FRX10



55012FRX36



55012X2



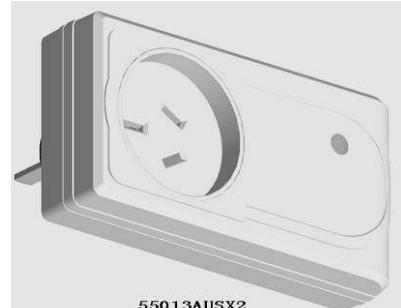
55012ITX10



55012X36



55012X10



55013AUSX2

TEST REPORT

Reference No. : TRHZ1405755

Date : May. 30, 2014

Page No. : 102 of 106



57005



57001



57004

Appendix I The following information was submitted and identified by the client, only for reference.

Reference No.	Product Model	Product Model	Product Model	Product Model	Product Model
1	2601 主机	51002FRX36	54002ITX10	55008GBX10	55609DKX10
2	2602	51002GBX3	54002X10	55008GBX2	55609DKX2
3	2603	51002GBX30	54005CHX10	55008GBX30	55609DKX36
4	2605	51002X3	54005DKX10	55008X10	55609FRX10
5	2606	51002X36	54005FRX10	55008X2	55609FRX2
6	2607	51003CHX23	54005GBX10	55008X36	55609FRX36
7	2612	51003CHX3	54005ITX10	55009CHX10	55609GBX10
8	2619	51003DKX3	54005X10	55009CHX2	55609GBX2
9	2621	51003DKX36	54006CHX10	55009CHX23	55609GBX30
10	2623	51003FRX3	54006DKX10	55009DKX10	55609X10
11	2631	51003FRX36	54006FRX10	55009DKX2	55609X2
12	2632	51003GBX3	54006GBX10	55009DKX36	55609X36
13	26-MAY	51003GBX30	54006ITX10	55009FRX10	55610CHX10
14	50001	51003X3	54006X10	55009FRX2	55610CHX2
15	50002	51003X36	54007CHX10	55009FRX36	55610CHX23
16	50003	51004CHX23	54007DKX10	55009GBX10	55610DKX10
17	50004	51004CHX3	54007FRX10	55009GBX2	55610DKX2
18	50005	51004DKX3	54007GBX10	55009GBX30	55610DKX36
19	50006	51004DKX36	54007ITX10	55009ITX10	55610FRX10
20	50007	51004FRX3	54007X10	55009ITX2	55610FRX2
21	50008	51004FRX36	54008CHX10	55009ITX36	55610FRX36
22	50009	51004GBX3	54008CHX23	55009X10	55610GBX10

TÜV NORD (Hangzhou) CO.,LTD.

Member of TÜV NORD Group

This Test Report is issued by the Company Subject to its General Conditions of Service printed overleaf or available on request. Attention is drawn to the limitations of liability, indemnification and jurisdictional policies defined therein. The results shown in this Test report refer only to the sample(s) tested unless otherwise stated. This test report shall not be reproduced, except in full, without written approval of the Company. 本报告按本公司所制定之通用服务条款所编制发放。请注意本报告首页背面之此条款，本公司之义务、免责、管辖权均有明确规定，该条款也可向本公司索取。除非另有说明，本报告仅对来样负责。未经许可，不得部分复制本报告。

5 Floor, No. 50 Jiuquan Road, Jianggan District, Hangzhou, China, 310019
web: www.tuv-nord.com/cn tel: +86(0)571 85386989 ext 212

中国·杭州市江干区九环路50号5楼(杭州市质量技术监督检测院) 邮编: 310019
fax: +86(0)571 85386986 e-mail/报告查询: GPSC@tuv-nord.com

TEST REPORT

Reference No. : TRHZ1405755

Date : May. 30, 2014

Page No. : 103 of 106

23	50010	51004GBX30	54008DKX10	55009X2	55610GBX2
24	50011	51004X3	54008DKX36	55009X36	55610GBX30
25	50012	51004X36	54008FRX10	55010CHX10	55610X10
26	50013	51011AUSX25	54008FRX36	55010CHX2	55610X2
27	50023	51011X36	54008GBX10	55010CHX23	55610X36
28	50024	51012AUSX25	54008GBX30	55010DKX10	56003CH
29	50025	51012GBX30	54008X10	55010DKX2	56003DK
30	50026	51012GBX36	54008X36	55010DKX36	56003FR
31	50027	51012X36	54009CHX10	55010FRX10	56003GB
32	50028	51015X36	54009CHX23	55010FRX2	56003IT
33	50029	51023USAX18	54009DKX10	55010FRX36	56004CH
34	50030	51023X3	54009DKX36	55010GBX10	56004DK
35	50031	51023X36	54009FRX10	55010GBX2	56004FR
36	50032	52001CHX23	54009FRX36	55010GBX30	56004GB
37	50033	52001DKX36	54009GBX10	55010ITX10	56004IT
38	50037	52001FRX36	54009GBX30	55010ITX2	56005CH
39	50038	52001X36	54009X10	55010ITX36	56005DK
40	50039	52002CHX23	54009X36	55010X10	56005FR
41	50040	52002DKX36	55001CHX10	55010X2	56005GB
42	50041	52002FRX36	55001CHX2	55010X36	56005IT
43	51007	52002X36	55001CHX23	55011AUSX10	56006CH
44	51010	52003X36	55001DKX10	55011AUSX2	56006DK
45	51019	52004X36	55001DKX2	55011AUSX25	56006FR
46	51020	52005X36	55001DKX36	55011CHX10	56006GB
47	51021	53001CHX10	55001FRX10	55011CHX2	56006IT
48	51024	53001CHX2	55001FRX2	55011CHX23	58001CHX10
49	51025	53001DKX10	55001FRX36	55011DKX10	58001CHX2
50	51026	53001DKX2	55001GBX10	55011DKX2	58001CHX23
51	51027	53001FRX10	55001GBX2	55011DKX36	58001DKX10
52	51028	53001FRX2	55001GBX30	55011FRX10	58001DKX2
53	51029	53001GBX10	55001ITX2	55011FRX2	58001DKX36
54	51030	53001GBX2	55001ITX36	55011FRX36	58001FRX10
55	51031	53001ITX2	55001X10	55011GBX10	58001FRX2
56	51035	53001X10	55001X2	55011GBX2	58001FRX36
57	51036	53001X2	55001X36	55011GBX30	58001GBX10
58	51037	53001X36	55002CHX10	55011X10	58001GBX2
59	51040	53002CHX10	55002CHX2	55011X2	58001GBX30
60	56003	53002CHX2	55002CHX23	55011X36	58001X10

TÜV NORD (Hangzhou) CO.,LTD.

Member of TÜV NORD Group

This Test Report is issued by the Company Subject to its General Conditions of Service printed overleaf or available on request. Attention is drawn to the limitations of liability, indemnification and jurisdictional policies defined therein. The results shown in this Test report refer only to the sample(s) tested unless otherwise stated. This test report shall not be reproduced, except in full, without written approval of the Company. 本报告按本公司所制定之通用服务条款所编制发放。请注意本报告首页背面之此条款，本公司之义务、免责、管辖权均有明确规定，该条款也可向本公司索取。除非另有说明，本报告仅对来样负责。未经许可，不得部分复制本报告。

 5 Floor, No. 50 Jiuquan Road, Jianggan District, Hangzhou, China, 310019
 web: www.tuv-nord.com/cn tel: +86(0)571 85386989 ext 212

 中国·杭州市江干区九环路50号5楼(杭州市质量技术监督检测院) 邮编: 310019
 fax: +86(0)571 85386986

e-mail/报告查询: GPSC@tuv-nord.com

TEST REPORT

Reference No. : TRHZ1405755

Date : May. 30, 2014

Page No. : 104 of 106

61	56004	53002DKX10	55002DKX10	55012CHX10	58001X2
62	56005	53002DKX2	55002DKX2	55012CHX2	58001X36
63	56006	53002FRX10	55002DKX36	55012CHX23	58002CHX10
64	57002	53002FRX2	55002FRX10	55012DKX10	58002CHX2
65	57004	53002GBX10	55002FRX2	55012DKx10	58002CHX23
66	61001	53002GBX2	55002FRX36	55012DKX2	58002DKX10
67	61002	53002ITX2	55002GBX10	55012DKx2	58002DKX2
68	2601-200	53002X10	55002GBX2	55012DKX36	58002DKX36
69	2601-3600	53002X2	55002GBX30	55012DKx36	58002FRX10
70	2601CH-1000	53003CHX10	55002ITX2	55012FRX10	58002FRX2
71	2601CH-200	53003CHX2	55002ITX36	55012FRX2	58002FRX36
72	2601DK-1000	53003DKX10	55002X10	55012FRX36	58002GBX10
73	2601DK-200	53003DKX2	55002X2	55012GBX10	58002GBX2
74	2601FR-200	53003FRX10	55002X36	55012GBX2	58002GBX30
75	2601FR-3600	53003FRX2	55003CHX10	55012GBX30	58002X10
76	2601IT-1000	53003GBX10	55003CHX2	55012ITX10	58002X2
77	2602-200	53003GBX2	55003CHX23	55012ITX2	58002X36
78	2602CH-1000	53003ITX2	55003DKX10	55012X10	58003CHX10
79	2602CH-200	53003X10	55003DKX2	55012X2	58003CHX2
80	2602DK-1000	53003X2	55003DKX36	55012X36	58003CHX23
81	2602DK-200	53005CHX10	55003FRX10	55013AUSX10	58003DKX10
82	2602FR-200	53005CHX2	55003FRX2	55013AUSX2	58003DKX2
83	2602IT-1000	53005DKX10	55003FRX36	55013AUSX25	58003DKX36
84	2603-200	53005DKX2	55003GBX10	55601CHX10	58003FRX10
85	2603CH-1000	53005FRX10	55003GBX2	55601CHX23	58003FRX2
86	2603CH-200	53005FRX2	55003GBX30	55601DKX10	58003FRX36
87	2603DK-1000	53005GBX10	55003ITX2	55601DKX36	58003GBX10
88	2603DK-200	53005GBX10	55003ITX36	55601FRX10	58003GBX2
89	2603FR-200	53005GBX2	55003X10	55601FRX36	58003GBX30
90	2603IT-1000	53005GBX2	55003X2	55601GBX10	58003X10
91	2605-200	53005ITX2	55003X36	55601GBX30	58003X2
92	2605-3600	53005X10	55005CHX10	55601X10	58003X36
93	2605CH-1000	53005X2	55005CHX2	55601X36	58005CHX10
94	2605CH-200	53006CHX10	55005CHX23	55602CHX10	58005CHX2
95	2605DK-1000	53006CHX2	55005DKX10	55602CHX23	58005CHX23
96	2605DK-200	53006DKX10	55005DKX2	55602DKX10	58005DKX10
97	2605FR-200	53006DKX2	55005DKX36	55602DKX36	58005DKX2
98	2605FR-3600	53006FRX10	55005FRX10	55602FRX10	58005DKX36

TÜV NORD (Hangzhou) CO.,LTD.

Member of TÜV NORD Group

This Test Report is issued by the Company Subject to its General Conditions of Service printed overleaf or available on request. Attention is drawn to the limitations of liability, indemnification and jurisdictional policies defined therein. The results shown in this Test report refer only to the sample(s) tested unless otherwise stated. This test report shall not be reproduced, except in full, without written approval of the Company. 本报告按本公司所制定之通用服务条款所编制发放。请注意本报告首页背面之此条款，本公司之义务、免责、管辖权均有明确规定，该条款也可向本公司索取。除非另有说明，本报告仅对来样负责。未经许可，不得部分复制本报告。

 5 Floor, No. 50 Jiuquan Road, Jiangnan District, Hangzhou, China, 310019
 web: www.tuv-nord.com/cn tel: +86(0)571 85386989 ext 212

 中国·杭州市江干区九环路50号5楼(杭州市质量技术监督检测院) 邮编: 310019
 fax: +86(0)571 85386986 e-mail/报告查询: GPSC@tuv-nord.com

TEST REPORT

Reference No. : TRHZ1405755

Date : May. 30, 2014

Page No. : 105 of 106

99	2605IT-1000	53006FRX2	55005FRX2	55602FRX36	58005FRX10
100	2606-200	53006GBX10	55005FRX36	55602GBX10	58005FRX2
101	2606-3600	53006GBX2	55005GBX10	55602GBX30	58005FRX36
102	2606CH-1000	53006ITX2	55005GBX2	55602X10	58005GBX10
103	2606CH-200	53006X10	55005GBX30	55602X36	58005GBX2
104	2606DK-1000	53006X2	55005ITX2	55605CHX10	58005GBX30
105	2606DK-200	53007CHX10	55005ITX36	55605CHX23	58005X10
106	2606FR-200	53007CHX2	55005X10	55605DKX10	58005X2
107	2606FR-3600	53007DKX10	55005X2	55605DKX36	58005X36
108	2606IT-1000	53007DKX2	55005X36	55605FRX10	58006CHX10
109	2607-200	53007FRX10	55006CHX10	55605FRX36	58006CHX2
110	2607-3600	53007FRX2	55006CHX2	55605GBX10	58006CHX23
111	2607CH-1000	53007GBX10	55006CHX23	55605GBX30	58006DKX10
112	2607CH-200	53007GBX10	55006DKX10	55605X10	58006DKX2
113	2607DK-1000	53007GBX2	55006DKX2	55605X36	58006DKX36
114	2607DK-200	53007GBX2	55006DKX36	55606CHX10	58006FRX10
115	2607FR-200	53007ITX2	55006FRX10	55606CHX23	58006FRX2
116	2607FR-3600	53007X10	55006FRX2	55606DKX10	58006FRX36
117	2607IT-1000	53007X2	55006FRX36	55606DKX36	58006GBX10
118	2627-1000	53008CHX23	55006GBX10	55606FRX10	58006GBX2
119	2627A-1000	53008DKX36	55006GBX2	55606FRX36	58006GBX30
120	2627B-1000	53008DKX36-1	55006GBX30	55606GBX10	58006X10
121	2627C-1000	53008FRX36	55006ITX2	55606GBX30	58006X2
122	2627D-1000	53008GBX30	55006ITX36	55606X10	58006X36
123	2627FA-1000	53008X36	55006X10	55606X36	58007CHX10
124	2627FB-1000	53009CHX23	55006X2	55607CHX10	58007CHX2
125	2627FC-1000	53009DKX36	55006X36	55607CHX23	58007CHX23
126	2627FD-1000	53009DKX36-1	55007CHX10	55607DKX10	58007DKX10
127	2627FE-1000	53009FRX36	55007CHX2	55607DKX36	58007DKX2
128	2627FQ-1000	53009GBX30	55007CHX23	55607FRX10	58007DKX36
129	2627Q-1000	53009X36	55007DKX10	55607FRX36	58007FRX10
130	26AY	53010CHX23	55007DKX2	55607GBX10	58007FRX2
131	26MCY	53010DKX36	55007DKX36	55607GBX30	58007FRX36
132	26MDY	53010DKX36-1	55007FRX10	55607X10	58007GBX10
133	26MY	53010FRX36	55007FRX2	55607X36	58007GBX2
134	26MY5	53010GBX30	55007FRX36	55608CHX10	58007GBX30
135	26QY	53010X36	55007GBX10	55608CHX2	58007X10
136	26QY5	53011CHX23	55007GBX2	55608CHX23	58007X2

TÜV NORD (Hangzhou) CO.,LTD.

Member of TÜV NORD Group

This Test Report is issued by the Company Subject to its General Conditions of Service printed overleaf or available on request. Attention is drawn to the limitations of liability, indemnification and jurisdictional policies defined therein. The results shown in this Test report refer only to the sample(s) tested unless otherwise stated. This test report shall not be reproduced, except in full, without written approval of the Company. 本报告按本公司所制定之通用服务条款所编制发放。请注意本报告首页背面之此条款，本公司之义务、免责、管辖权均有明确规定，该条款也可向本公司索取。除非另有说明，本报告仅对来样负责。未经许可，不得部分复制本报告。

 5 Floor, No. 50 Jiuhuan Road, Jianggan District, Hangzhou, China, 310019
 web: www.tuv-nord.com/cn tel: +86(0)571 85386989 ext 212

 中国·杭州市江干区九环路50号5楼(杭州市质量技术监督检测院) 邮编: 310019
 fax: +86(0)571 85386986 e-mail/报告查询: GPSC@tuv-nord.com

TEST REPORT

Reference No. : TRHZ1405755

Date : May. 30, 2014

Page No. : 106 of 106

137	51001CHX23	53011DKX36	55007GBX30	55608DKX10	58007X36
138	51001CHX3	53011DKX36-1	55007ITX2	55608DKX2	6899F(1620)
139	51001DKX3	53011FRX36	55007ITX36	55608DKX36	6899MBE
140	51001DKX36	53011GBX30	55007X10	55608FRX10	6918A
141	51001FRX3	53011X36	55007X2	55608FRX2	6918D
142	51001FRX36	54001CHX10	55007X36	55608FRX36	6919A
143	51001GBX3	54001DKX10	55008CHX10	55608GBX10	6919D
144	51001GBX30	54001FRX10	55008CHX2	55608GBX2	
145	51001X3	54001GBX10	55008CHX23	55608GBX30	
146	51001X36	54001ITX10	55008DKX10	55608X10	
147	51002CHX23	54001X10	55008DKX2	55608X2	
148	51002CHX3	54002CHX10	55008DKX36	55608X36	
149	51002DKX3	54002DKX10	55008FRX10	55609CHX10	
150	51002DKX36	54002FRX10	55008FRX2	55609CHX2	
151	51002FRX3	54002GBX10	55008FRX36	55609CHX23	
152	70003	57005	57001		

***** END OF REPORT *****